



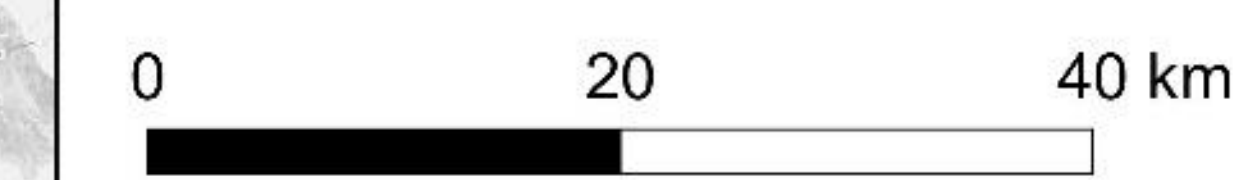
Preliminary Flood Risk Assessment for the international Drin/Drim-Buna/Bojana River Basin

Areas of potential significant flood risk

Legend:

- Potentially flooded area
- Lake
- Reservoir
- River network
- Boundary of the Drin river basin
- International borders
- City
- Dam
- APSFR location
- Approximate APSFR location
- ME - 6** No. / code of APSFR
- Significance criteria exceeded by far
- Significance criteria just reached
- No data available

Scale:



WGS84 / UTM-Zone 34N

Data sources:

BEAM Landuse 2012, OSM, World DEM light, Airbus D&S

Risk information inputs by national experts:

Angel Panov (MK), Lavdim Osmani (KO), Stela Guxo, Eduart Cani (AL), Zdenka Ivanovic (ME)

PFRA-Study and maps:

Consultants: INFRASTRUKTUR & UMWELT | INFRASTRUKTUR & UMWELT
Professor Böhm und Partner
Darmstadt, Germany

Maps: geomer GmbH,
Heidelberg, Germany



Date: 09 November 2018

The study is part of the project „Climate Change Adaptation in Transboundary Flood Risk Management in the Western Balkans”

Commissioned by German Federal Ministry for Economic Cooperation and Development (BMZ)
Implemented by GIZ

