

The modular training MOSA includes theory-sessions and practical exercises and provides the participants with a platform for joint reflections and exchange of experiences. At least one field trip supports the participants to better link theory to practice.

During the training, participants receive all power point presentations and a MOSA Reader. A Training of Trainers (ToT) Manual is also available with different exercises, didactical remarks and video links.

At the end of the 6-day course participants will have an improved understanding of sustainable agriculture as a way to increase productivity, ensure social stability and improve economic returns without compromising the availability and quality of limited natural resources. Furthermore, participants will have an understanding of the complexity of sustainable agriculture and of the need to address its multiple dimensions.

The MOSA-training is offered in English, French and Spanish languages.

'MOSA gave me a new perspective of evaluating the sustainability of agriculture in my country. In the past I thought about sustainability mainly from an economic point of view. Now I know that long-term economic success only comes when acting in an environmentally and socially responsible manner. Therefore my ability for good decision making in terms of pest control, soil conservation and efficient water use has increased.'



Contact for the MOSA-training
Sector Project Sustainable Agriculture (NAREN)
Friederike Kraemer
T +49619679-2438
E friederike.kraemer@giz.de
I www.giz.de/sustainable-agriculture



Published by
Deutsche Gesellschaft für
Internationale Zusammenarbeit (GIZ) GmbH

Registered offices
Bonn and Eschborn, Germany

Sector Project Sustainable Agriculture (NAREN)
Dag-Hammarskjöld-Weg 1-5
65760 Eschborn, Germany
T +49 6196 79-0
F +49 6196 79-1115
E naren@giz.de
I www.giz.de/sustainable-agriculture

Responsible
Dr. Alberto Camacho-Henriquez and Friederike Kraemer

Text
Sector Project Sustainable Agriculture

Photo credits
© GIZ/Friederike Kraemer

Design and Layout
Ira Olaleye, Eschborn

Printed by
Druckerei Druckreif, Frankfurt
Printed on FSC certified paper

May 2016

Sector Project Sustainable Agriculture (NAREN)



MOSA – Modules on Sustainable Agriculture

giz Deutsche Gesellschaft
für Internationale
Zusammenarbeit (GIZ) GmbH

'Sustainable agriculture is an integrated system of plant and animal production practices (...) that will, over the long term: satisfy human food and fiber needs; enhance environmental quality (...); sustain the economic viability of farm operations; and enhance the quality of life for farmers and society as a whole.'

Western Sustainable Agriculture Research & Education:
 » www.westernsare.org/About-Us/What-is-Sustainable-Agriculture

What is MOSA?

Modules on Sustainable Agriculture (MOSA) is a modular training developed by the Deutsche Gesellschaft für Internationale Zusammenarbeit (GIZ) on behalf of the Federal Ministry for Economic Cooperation and Development (BMZ).

Objective

Training participants develop a sound understanding of the concept of sustainable agriculture based on the social, economic and ecological dimensions in the context of climate change and food security.

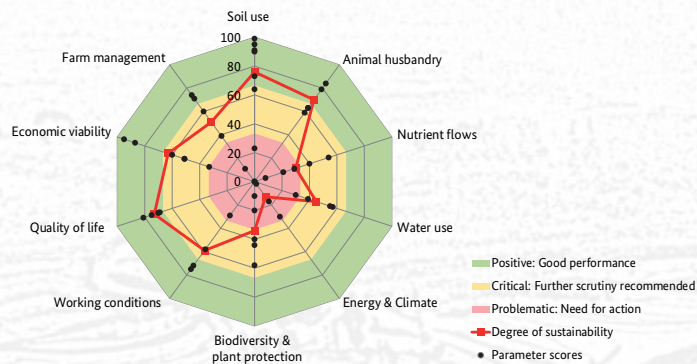


Fig. 1 Example of a RISE-polygon that rates sustainability based on the 10 RISE themes and 50 indicators.

Who is addressed?

The MOSA target group are practitioners and decision-makers from public and private development organizations working in planning, implementation and/or outreach of rural development, agriculture and natural resource management.

Context

Sustainable agriculture is the key to feeding the growing world population, to provide a livelihood for rural populations and to protect and conserve natural resources at the same time. Sustainable agricultural practices are important to reverse the trend of dwindling natural resources.

MOSA has been developed on the basis of RISE, an analytical tool looking at sustainability at farm level from a holistic perspective along the three dimensions of economic, ecological and social sustainability.

» www.hafl.bfh.ch/de/forschung-dienstleistungen/agrarwissenschaften/nachhaltigkeit-und-oekosysteme/nachhaltigkeitsbeurteilung/rise.html



What does MOSA provide?

MOSA enables trainees to take a holistic view on sustainable agriculture and its present and future challenges.

The training consists of 17 modules:

- » Sustainability
- » Elements of Sustainable Agriculture
- » Soils
- » Nutrient Cycles
- » Livestock
- » Water and Water Use
- » Climate
- » Energy
- » Biodiversity
- » Plant Protection
- » Post-harvest Losses
- » Economic Viability
- » Sustainable Value Chains
- » Labor Conditions
- » Good Quality of Life
- » Measuring Sustainability on Farm Level
- » Sustainable Agricultural Policies

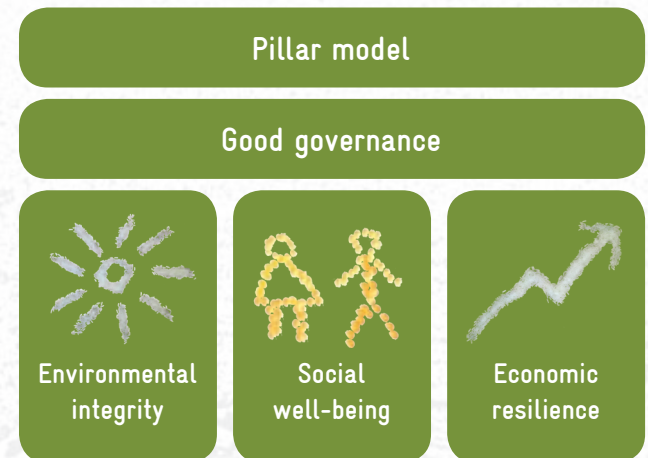


Fig. 2 FAO: Sustainability Assessment of Food and Agriculture Systems (SAFA).

» www.fao.org/nr/sustainability/sustainability-assessments-safa/en