



BACKUP Education

Supporting countries in accessing funding
for quality education

BACKUP Education supports you

Commissioned by the German Federal Ministry for Economic Cooperation and Development (BMZ), *BACKUP Education* aims to support the *Local Education Groups* (LEG) of our partner countries to access and implement resources from the multilateral GPE fund. On behalf of BMZ, GIZ has been supporting selected African partner countries in applying for GPE funds since 2011. *BACKUP Education* draws on this expertise, extends this commitment to all GPE eligible countries and continues to be committed to **B**uilding **A**lliances, **C**reating **K**nowledge and **U**pdating **P**artners worldwide. To this end, national authorities as well as civil society organisations (CSO) and international organisations are eligible to apply for our support. Our support is driven by the ambition to promote the integration of gender equality in education-sector planning and achieve full alignment with GPE's goal of gender hardwiring in all funding mechanisms. Our core team is located in Bonn, Germany.

A permanent representation of BACKUP Education in Paris works closely with the GPE Secretariat there. We join forces – to successfully apply for your GPE funding.

Our support is tailored to your needs

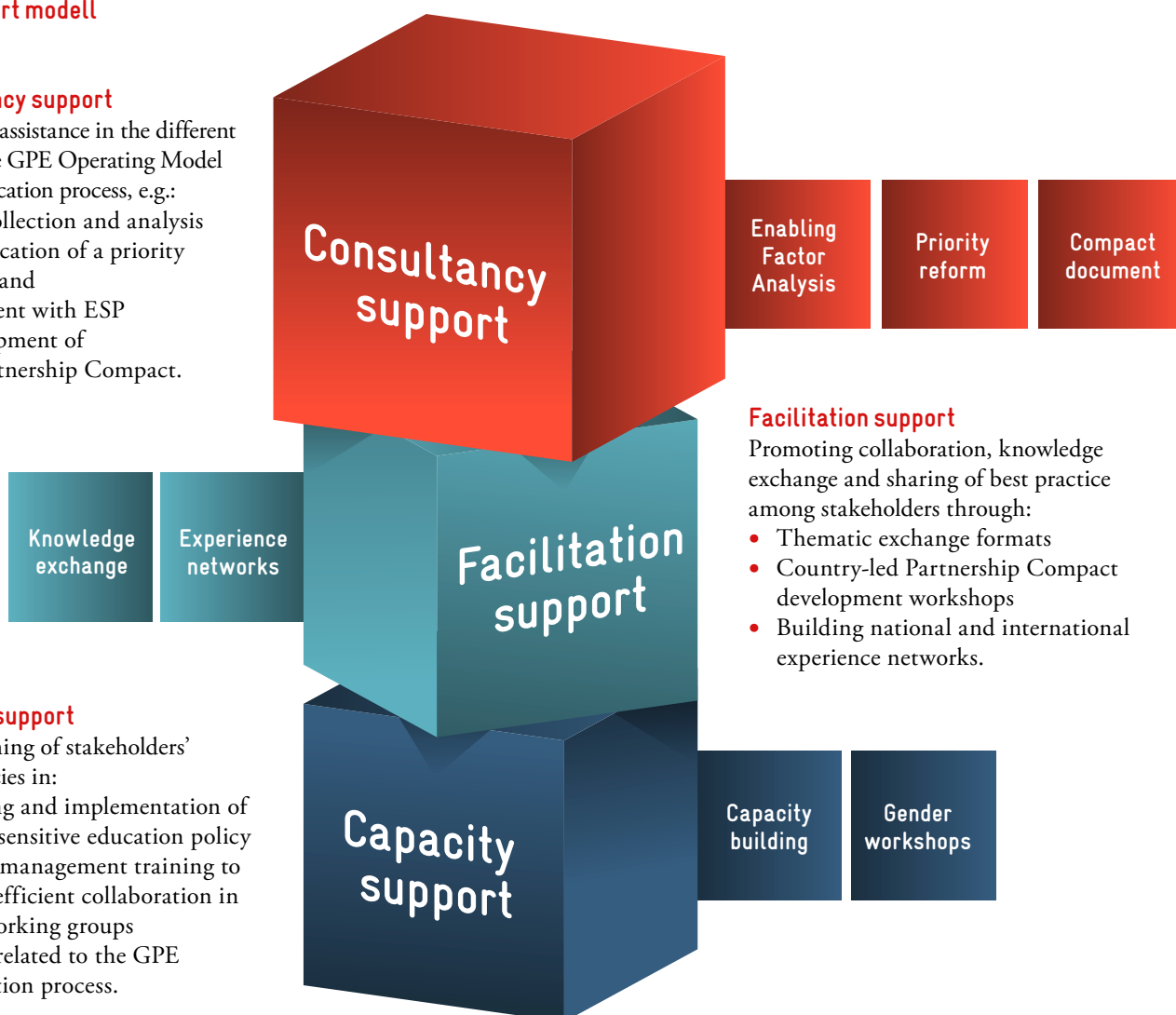
We take a demand-based, country-led approach and offer a variety of support measures for our partners to choose from according to their needs, which are determined in a consultative process with our experts. Our services are directed at strengthening national expertise and may include funding of a consultant, capacity building of staff and facilitating knowledge exchange among stakeholders. All measures eligible for support by BACKUP Education must have a clear link to GPE processes and a gender lens will be applied.

Our support modell

Consultancy support

Dedicated assistance in the different steps of the GPE Operating Model 2025 application process, e.g.:

- Data collection and analysis
- Identification of a priority reform and alignment with ESP
- Development of the Partnership Compact.



Capacity support

Strengthening of stakeholders' competencies in:

- Planning and implementation of gender-sensitive education policy
- Project management training to enable efficient collaboration in LEG working groups
- Topics related to the GPE application process.

BACKUP support in practice

Example Country A

- Country A is eligible to apply for the Girls' Education Accelerator (GEA). The Ministry of Education (MoE) has already started with the Enabling Factor Analysis but the gender-disaggregated data is outdated and the MoE lacks staff capacity.
- BACKUP Education hires a consultant to assist in the data analysis and the identification of priority reforms with regards to gender.
- BACKUP Education supports the sustainable conceptualisation of gender-sensitive system transformation in the Partnership Compact by financing capacity building for government and CSO staff.
- BACKUP Education hires a consultant to monitor the planning and implementation of the compact development steps throughout the whole process.
- BACKUP Education supports stakeholders in facilitating a country-led dialogue regarding deficiencies and progress in gender equality to identify potential reform needs.

Who is eligible to apply:

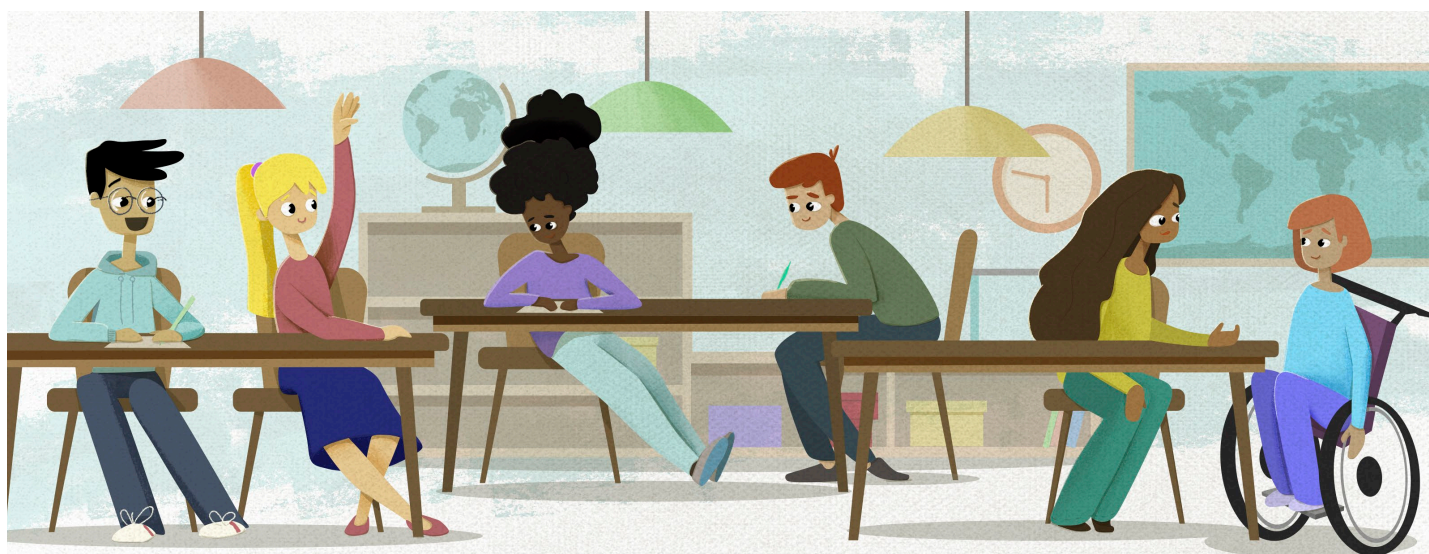
All 95 eligible partner countries of the Global Partnership for Education are encouraged to apply for our support. We accept applications from any Local Education Group stakeholder.

Example Country B

- Country B is initiating the application process for GPE funding and is eligible for the System Transformation Grant. However, coordination of the MoE departments involved in the preparation of the Partnership Compact represents a challenge. Also, the MoE has identified a lack of interest regarding gender equality in education-sector planning among the stakeholders, but wants to promote it as a priority reform.

Call for action:

Please contact us with a short description of the anticipated or identified bottlenecks in the development of the → *Partnership Compact Contact form* (or scan the QR code below). Please complete the form and send it to our experts → edu-grant-support@giz.de, who will discuss with you the possible support modes and advise you on the next process steps. Kindly take into consideration that our experts can be contacted in these languages: English, Spanish and German.



Imprint

As a federally owned enterprise, GIZ supports the German Government in achieving its objectives in the field of international cooperation for sustainable development.

Published by:
Deutsche Gesellschaft für
Internationale Zusammenarbeit (GIZ) GmbH

Programme:
Global Project Education | Component BACKUP Education

Friedrich-Ebert-Allee 32 + 36
53113 Bonn, Germany

T +49 228 4460-3644
E edu-grant-support@giz.de
I www.giz.de/en/worldwide/75066.html

Design & Infographics:
creative republic, Thomas Maxeiner Visual Communications,
Germany

Illustrations:
© creative republic/Bukela Campbell, Germany

Disclaimer:

The information in this report, or upon which this report is based, has been obtained from sources the authors believe to be reliable and accurate. While reasonable efforts have been made to ensure that the contents of this publication are factually correct, GIZ GmbH does not accept responsibility for the accuracy or completeness of the contents, and shall not be liable for any loss or damage that may be occasioned directly or indirectly through the use of, or reliance on, the contents of this publication.

URL links:

This publication contains links to external websites. Responsibility for the content of the listed external sites always lies with their respective publishers. When the links to these sites were first posted, GIZ checked the third-party content to establish whether it could give rise to civil or criminal liability. However, the constant review of the links to external sites cannot reasonably be expected without concrete indication of a violation of rights. If GIZ itself becomes aware or is notified by a third party that an external site it has provided a link to gives rise to civil or criminal liability, it will remove the link to this site immediately. GIZ expressly dissociates itself from such content.

On behalf of

Federal Ministry for Economic Cooperation and Development (BMZ)

GIZ is responsible for the content of this publication.

Bonn, December 2022

Deutsche Gesellschaft für
Internationale Zusammenarbeit (GIZ) GmbH

Registered offices
Bonn and Eschborn

Dag-Hammarskjöld-Weg 1 - 5
65760 Eschborn, Germany
T +49 61 96 79-0
F +49 61 96 79-11 15

Friedrich-Ebert-Allee 36 + 40
53113 Bonn, Germany
T +49 228 44 60-0
F +49 228 44 60-17 66

E info@giz.de
I www.giz.de



Federal Ministry
for Economic Cooperation
and Development