

**Succeeding with the resource transformation:**

**Sustainable resource use as the missing link to deliver on the SGDs**

# The IRP ... (more than) the other Panel!

## The International Resource Panel – IRP :

- Launched in 2007 by the UNEP
- A science-policy interface on the sustainable use of natural resources



### Panel Co-Chairs:

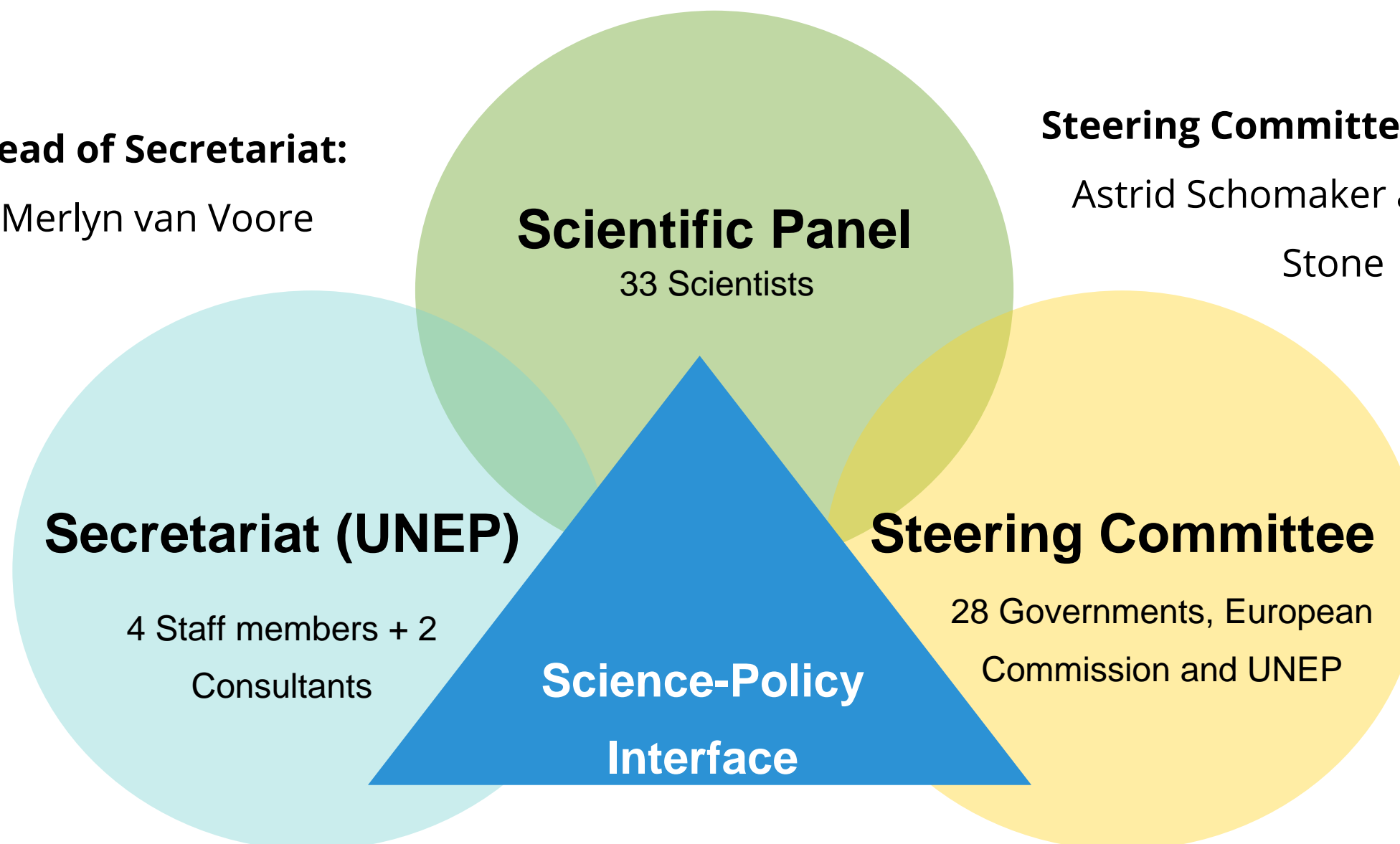
Janez Potočnik and Izabella Teixeira

### Head of Secretariat:

Merlyn van Voore

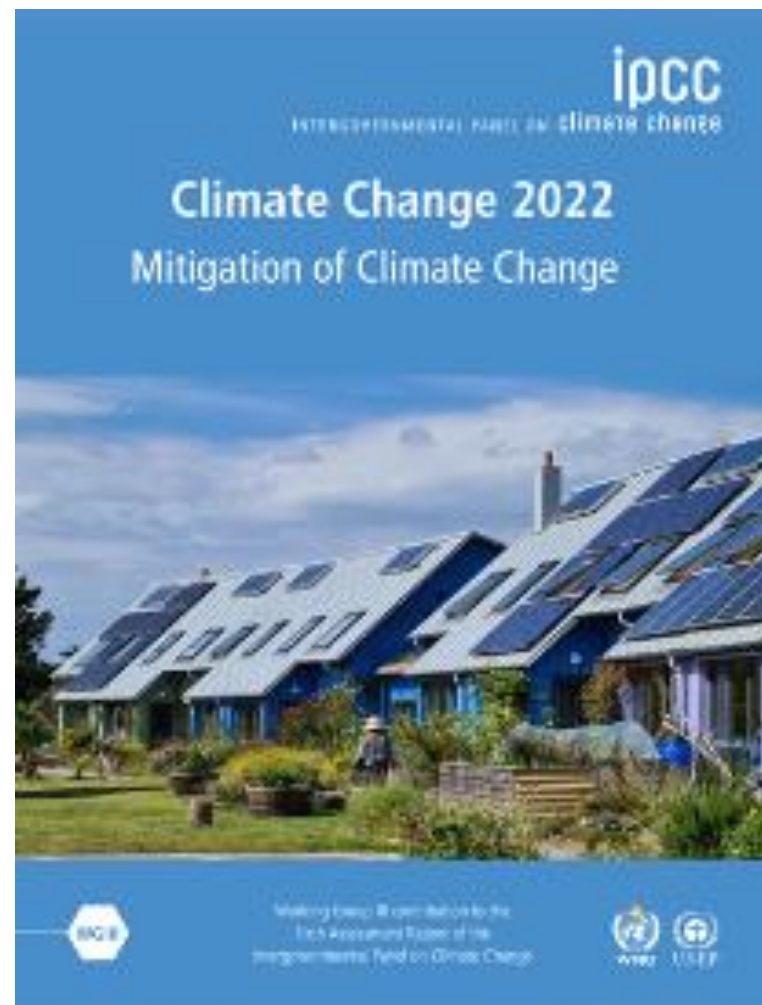
### Steering Committee Co-Chairs:

Astrid Schomaker and Steven Stone

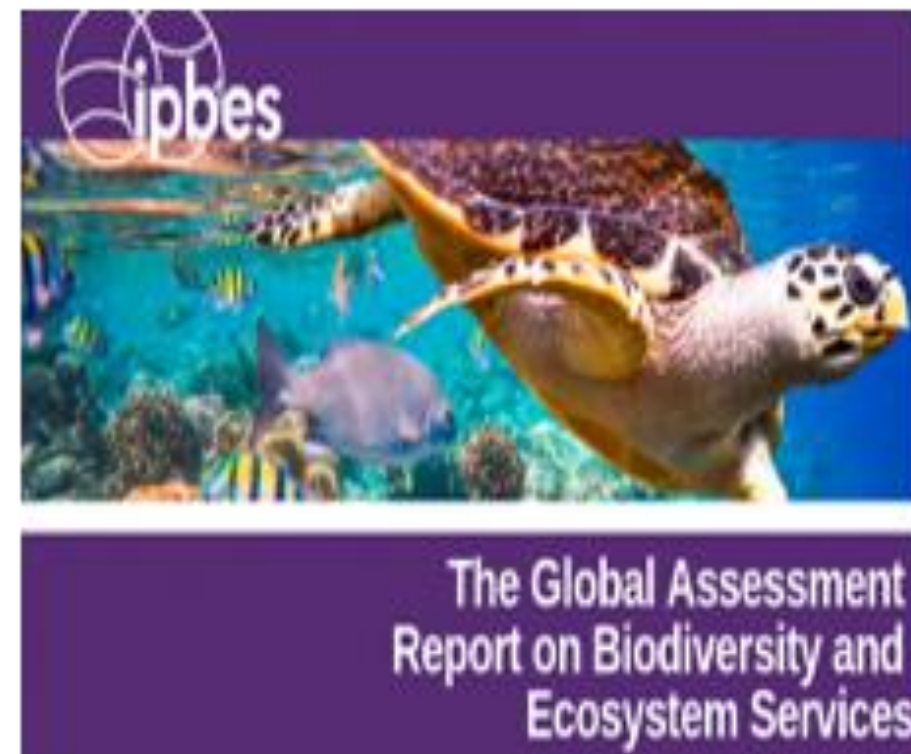


# GRO 2024: the missing link

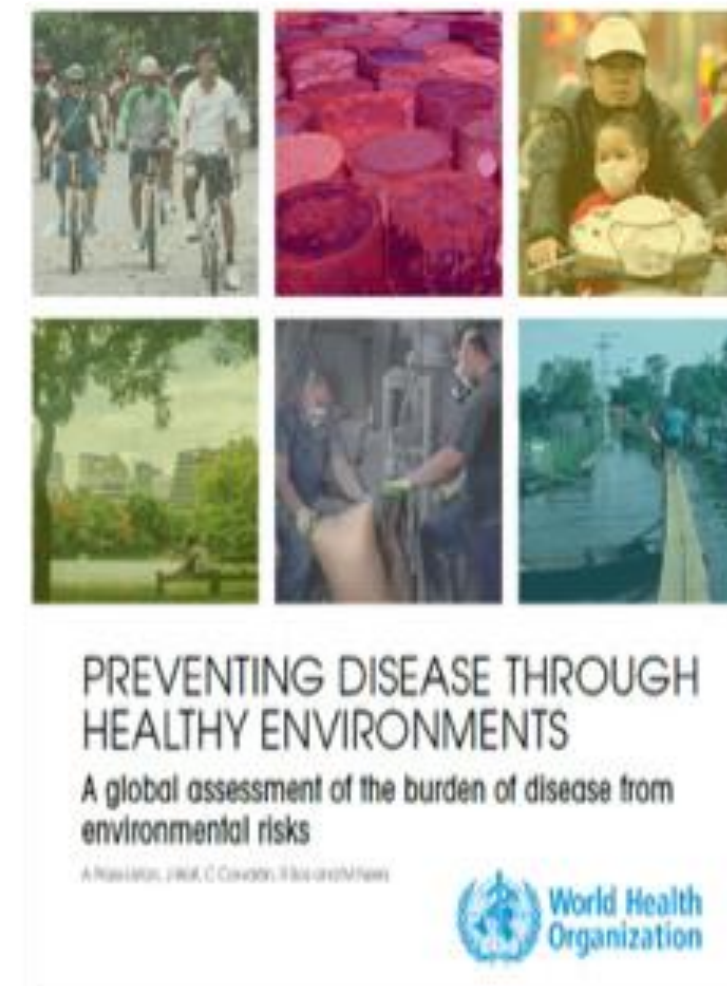
## 1. IPCC: Climate Change



## 2. IPBES: Biodiversity loss and Ecosystem Services



## 3. WHO: Environment and Health

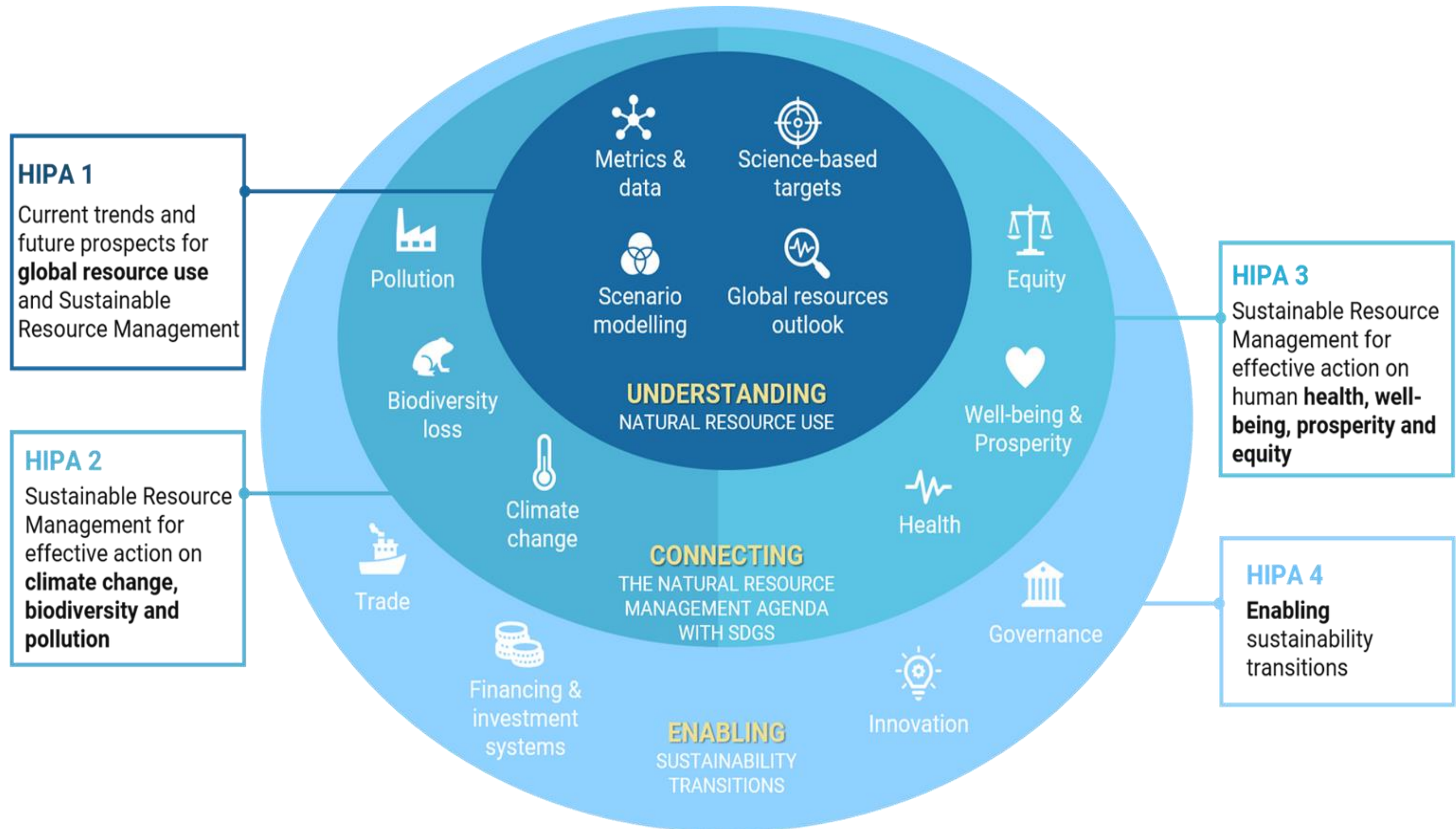


## 4. IRP: Unsustainable Resource Use



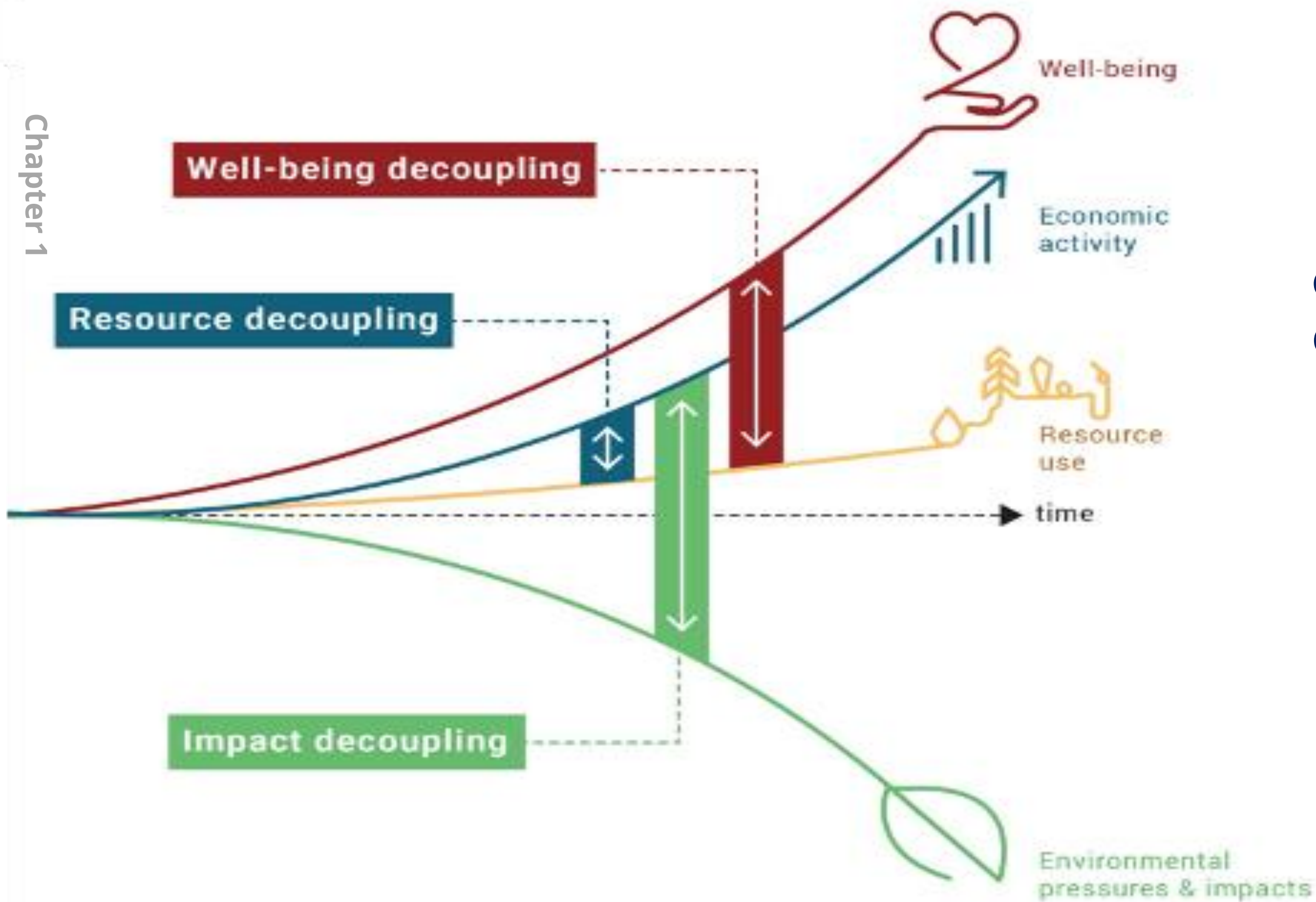


# IRP 2022-2025 High Impact Priority Areas





# Decoupling as a solution



Expanding, refining,  
operationaising the  
concept of decoupling



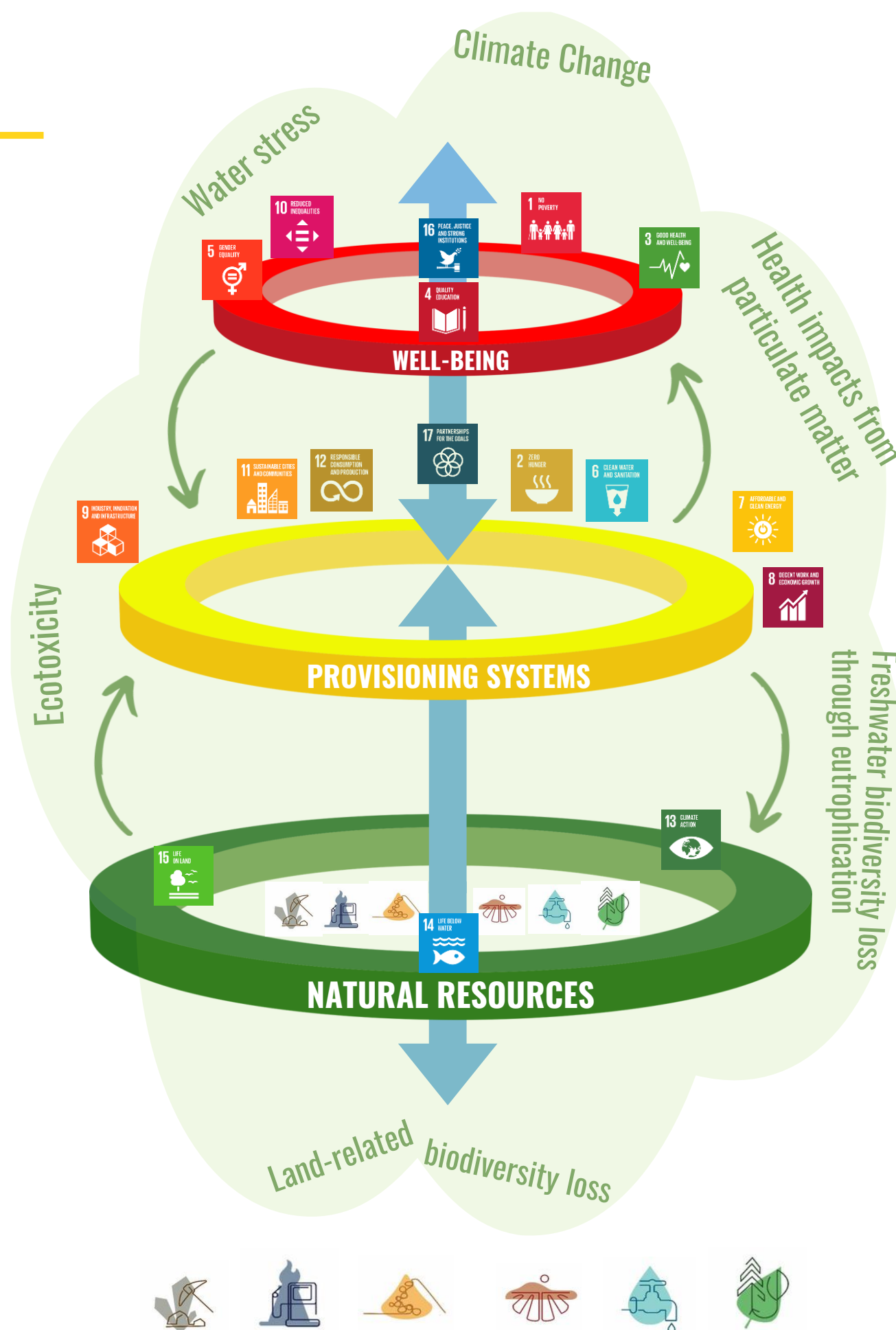


# Provisioning Systems

## Approach

Chapter 1

Adopting the concept of “provisioning systems” can enable an integrated and systemic







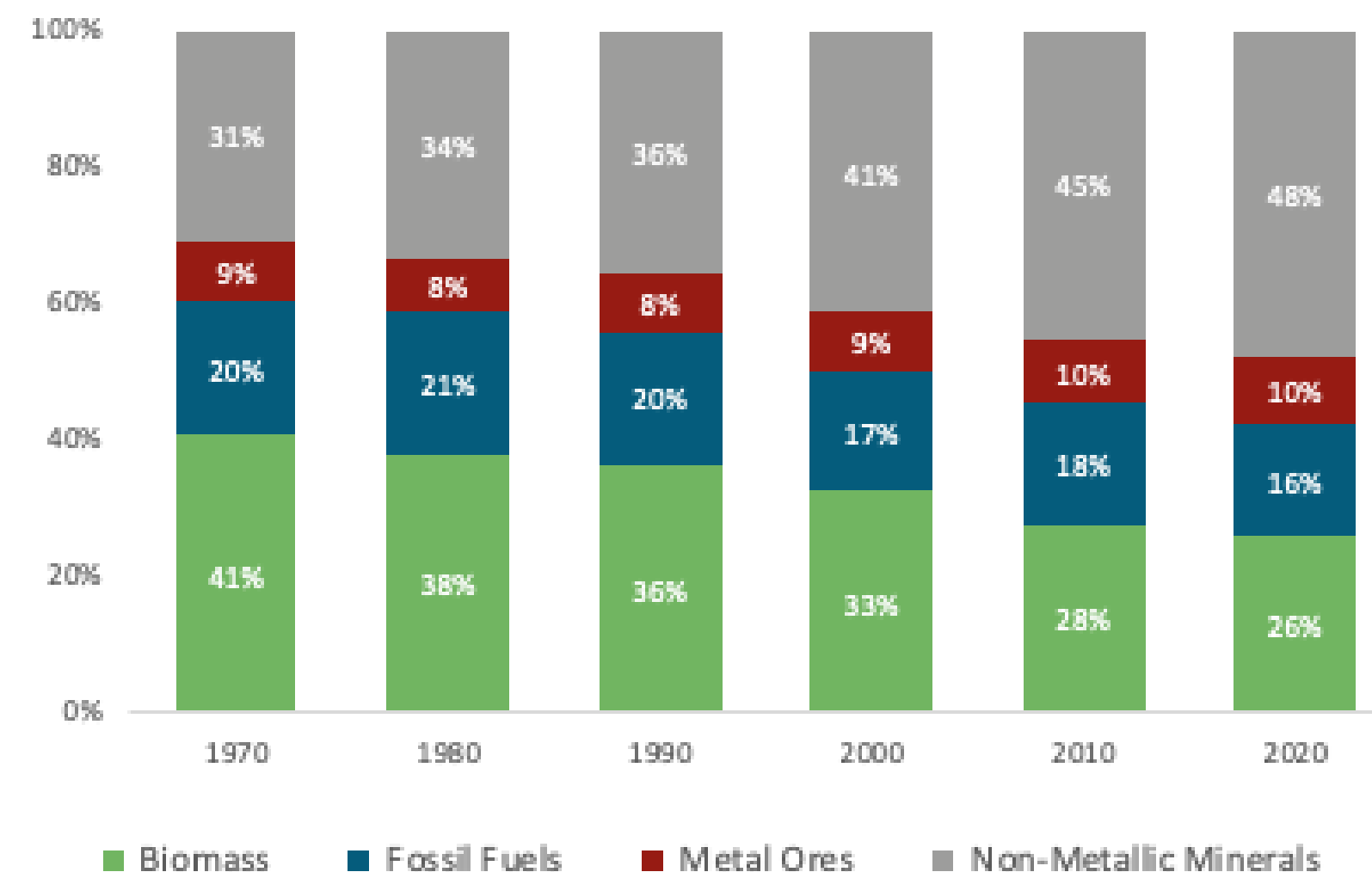
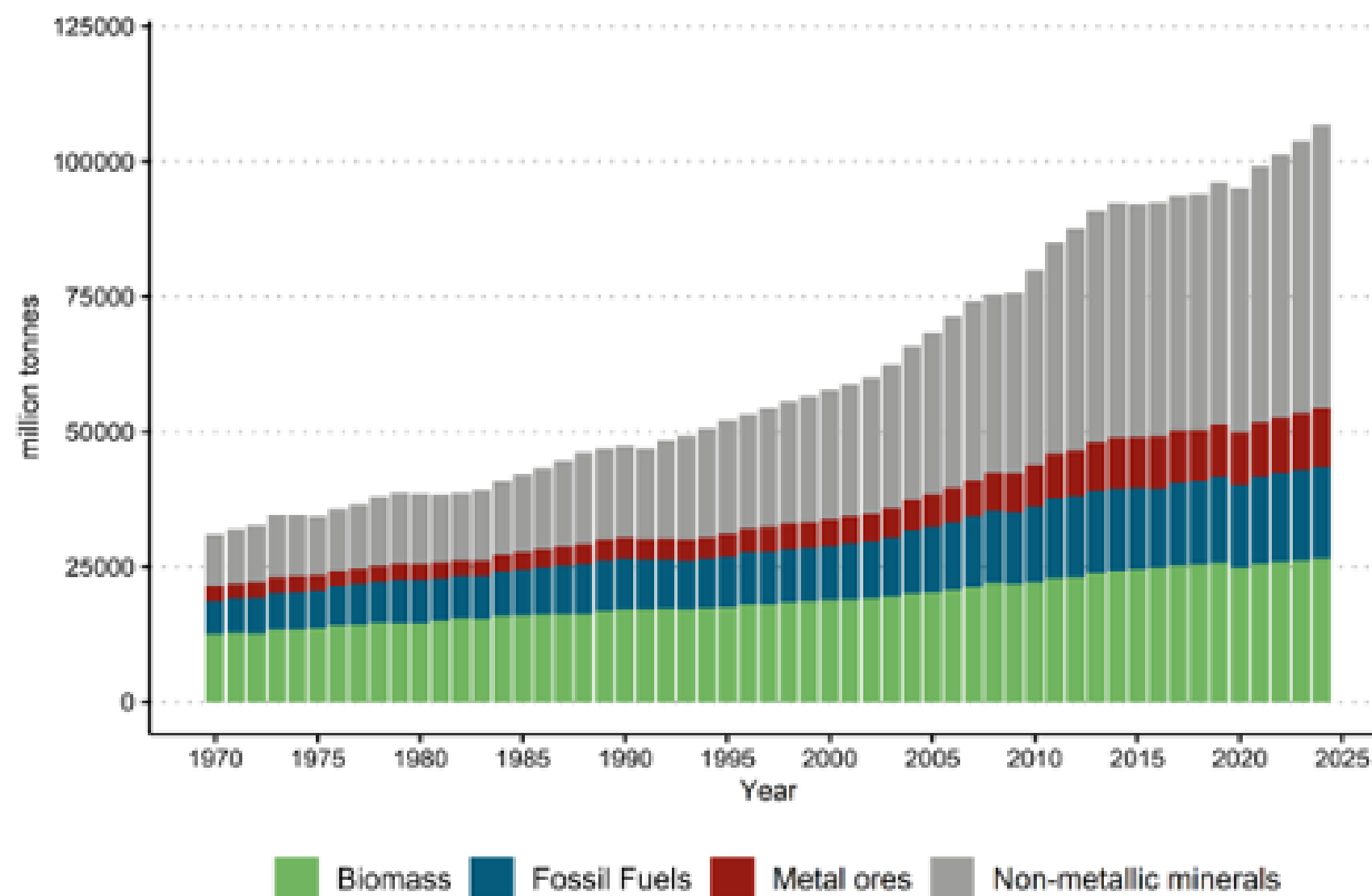




# Drivers, pressures, and natural resource use trends

Increased pressure on environmental systems due to continuous **urbanization** and **industrialization**

Chapter 2



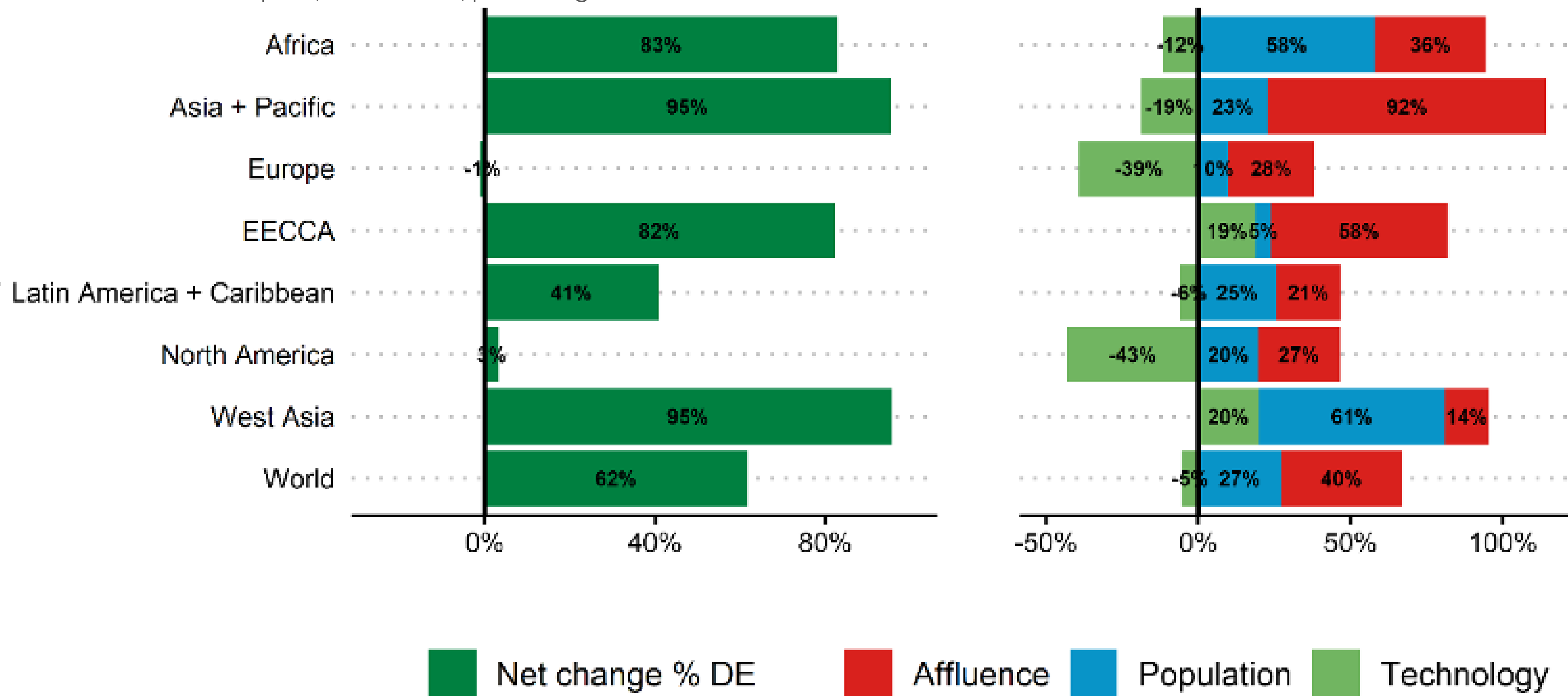




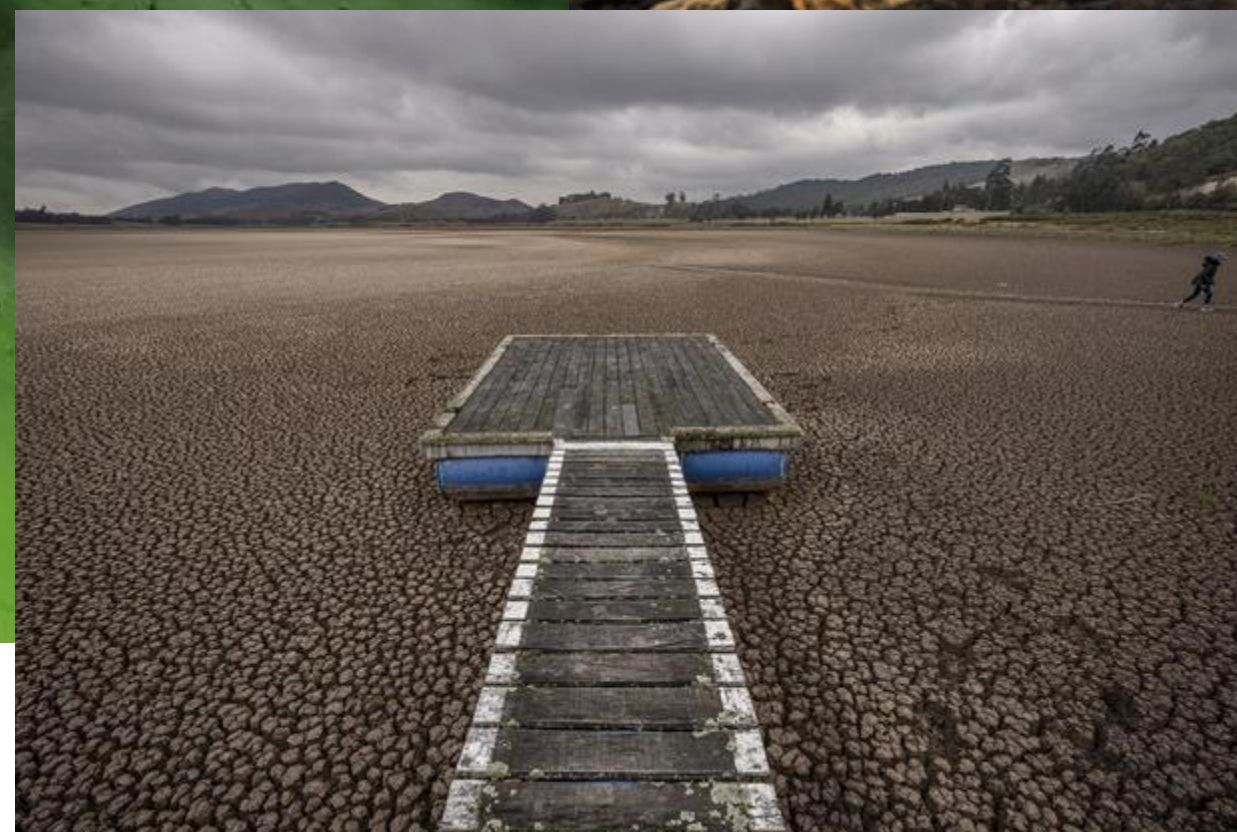
# Drivers of Material Footprint

Drivers of material footprint, 2000 – 2022, percentage.

Chapter 2











# Impacts - Resource use is driving the triple planetary crisis

## Challenges

### ➤ The triple planetary crisis

#### Chapter 3



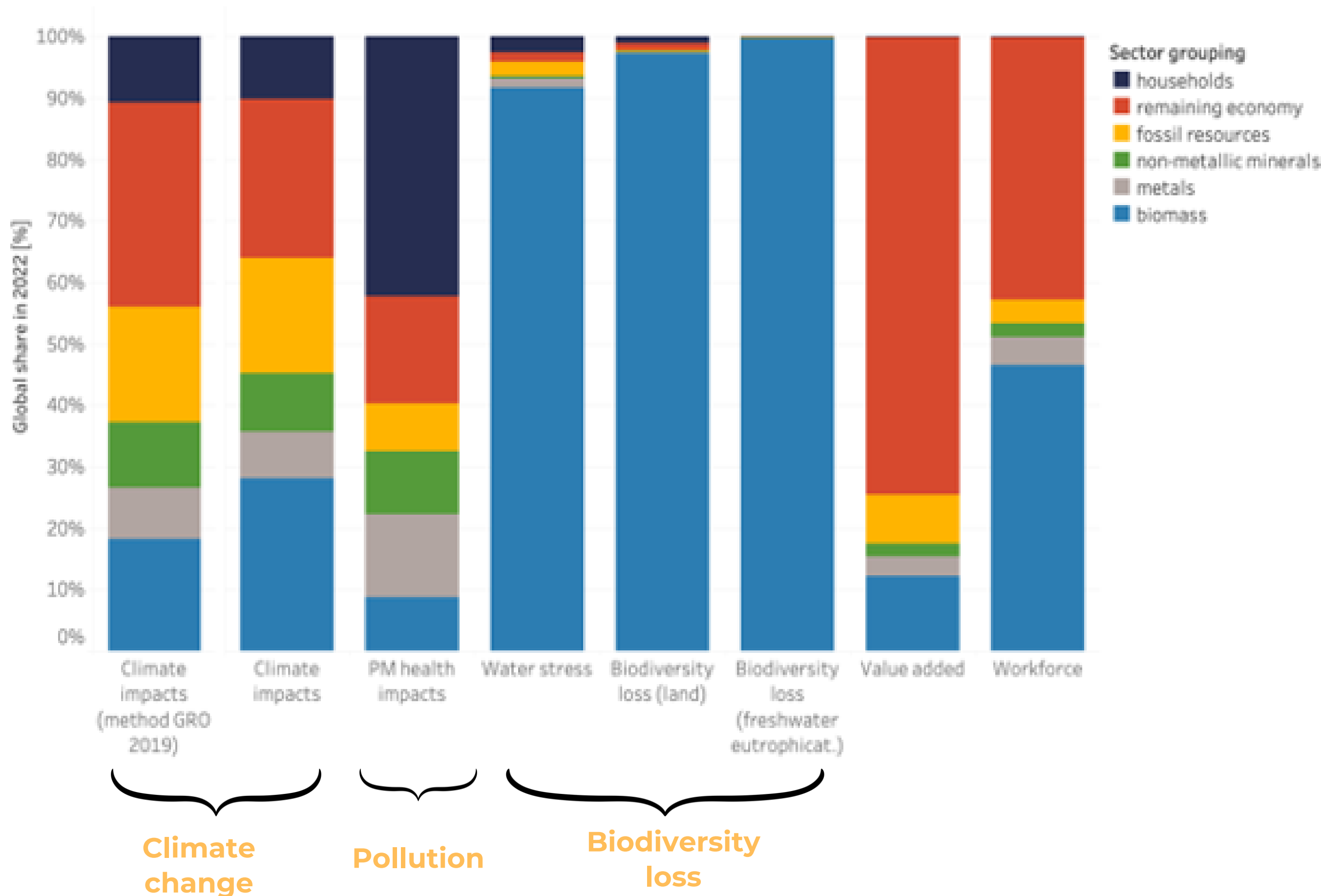
Climate change



Biodiversity loss



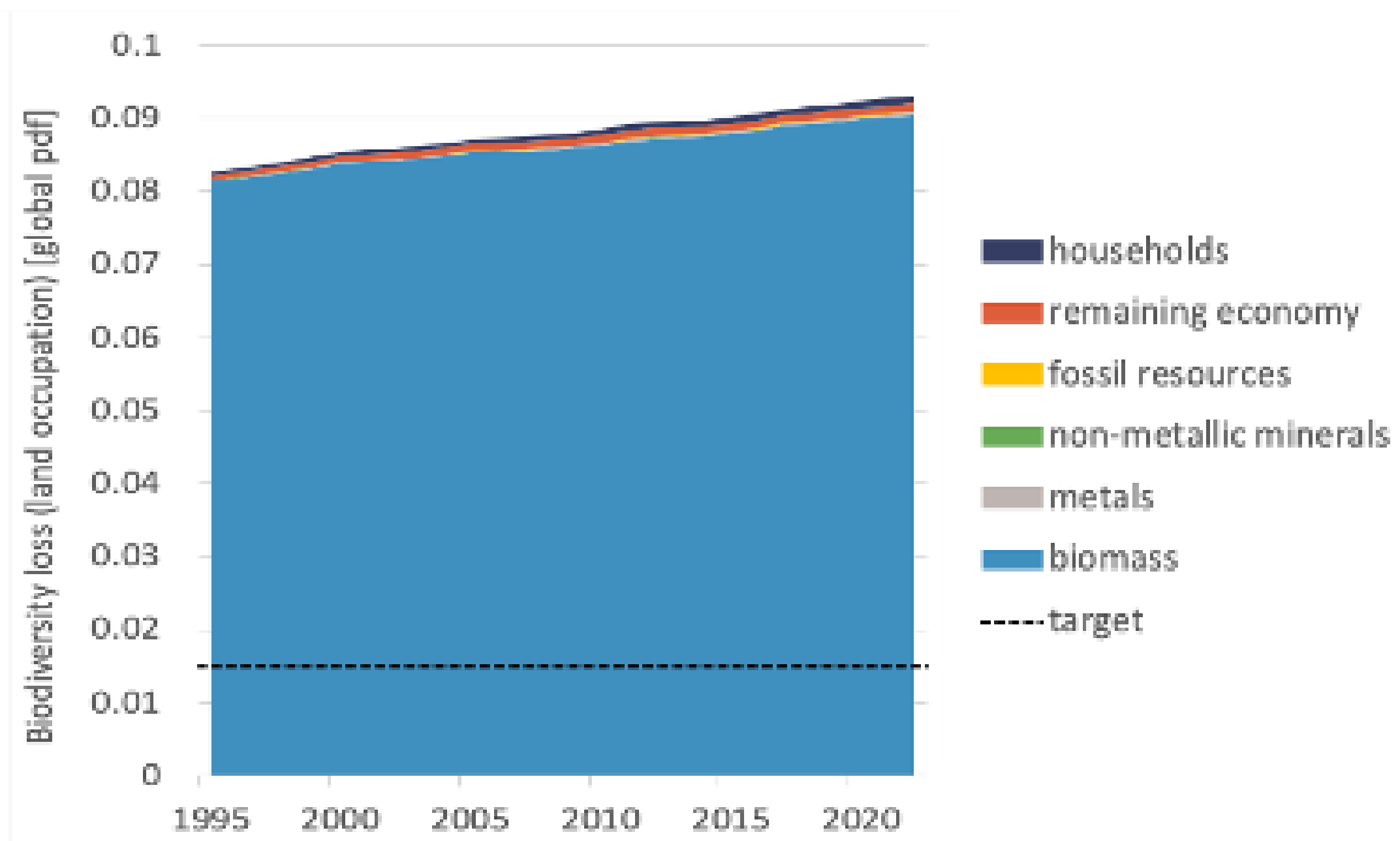
Pollution





- **Science based targets greatly exceeded**
- **Wellbeing indicators correlate with climate impacts**
- **Environmental impacts continue to grow**

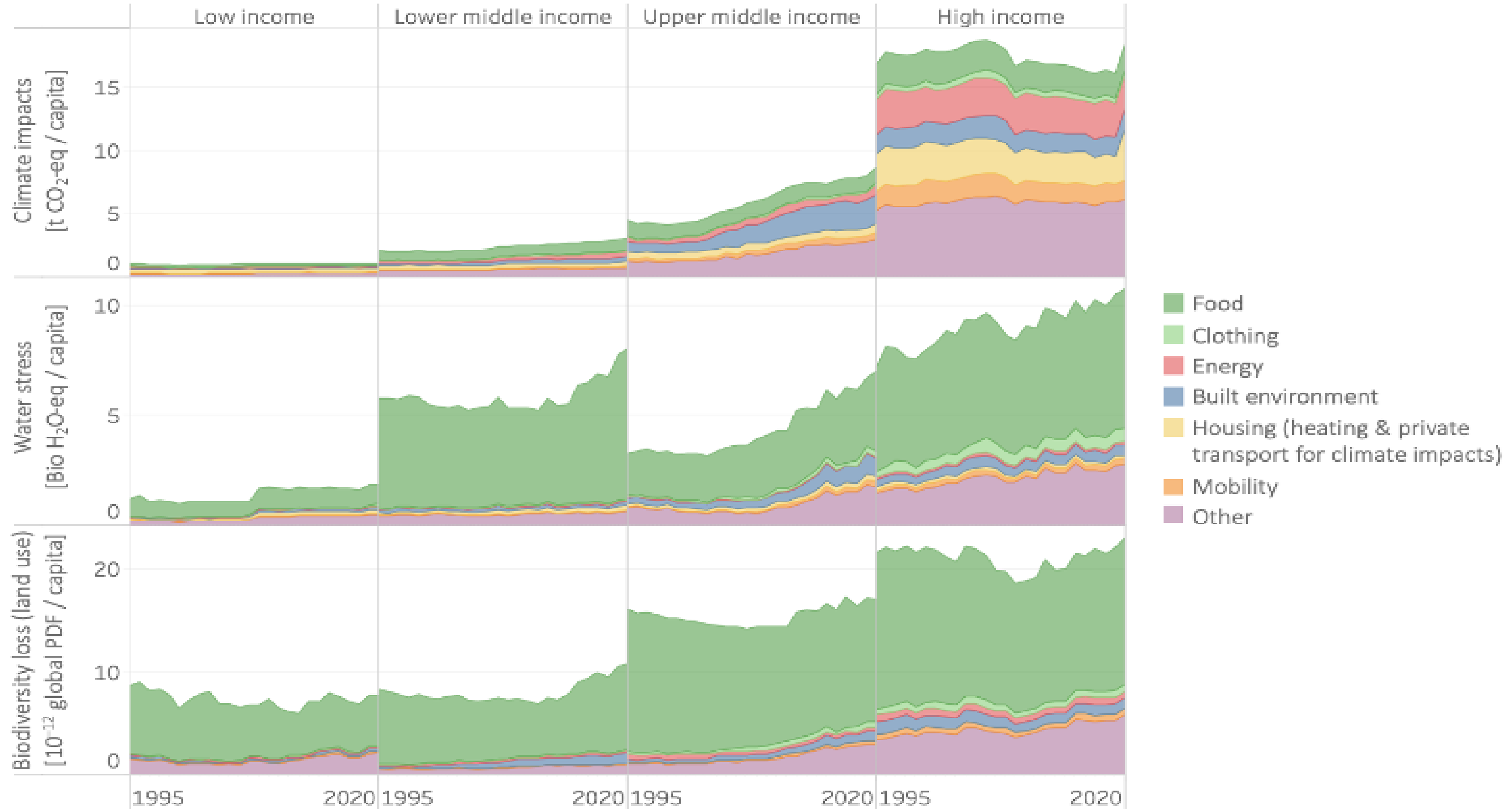
- **Per capita footprint difference in different regions**
- **70% total climate change impacts by provisioning systems**







# Footprints of countries by income group





# Scenario outlook

Scenario built up as **three 'shifts'** plus **measures to support Just Transition** contrasted against **Historical Trends**

Multi-model framework with provisioning system lens

Chapter 4

Sustainable Consumption  
and Production (SCP)

Resource Efficiency

Climate and Energy

Food and Land

Just Transition

BUILT ENVIRONMENT  
shelter & mobility

ENERGY SYSTEM  
(includes transport)

FOOD SYSTEM  
agriculture & land use

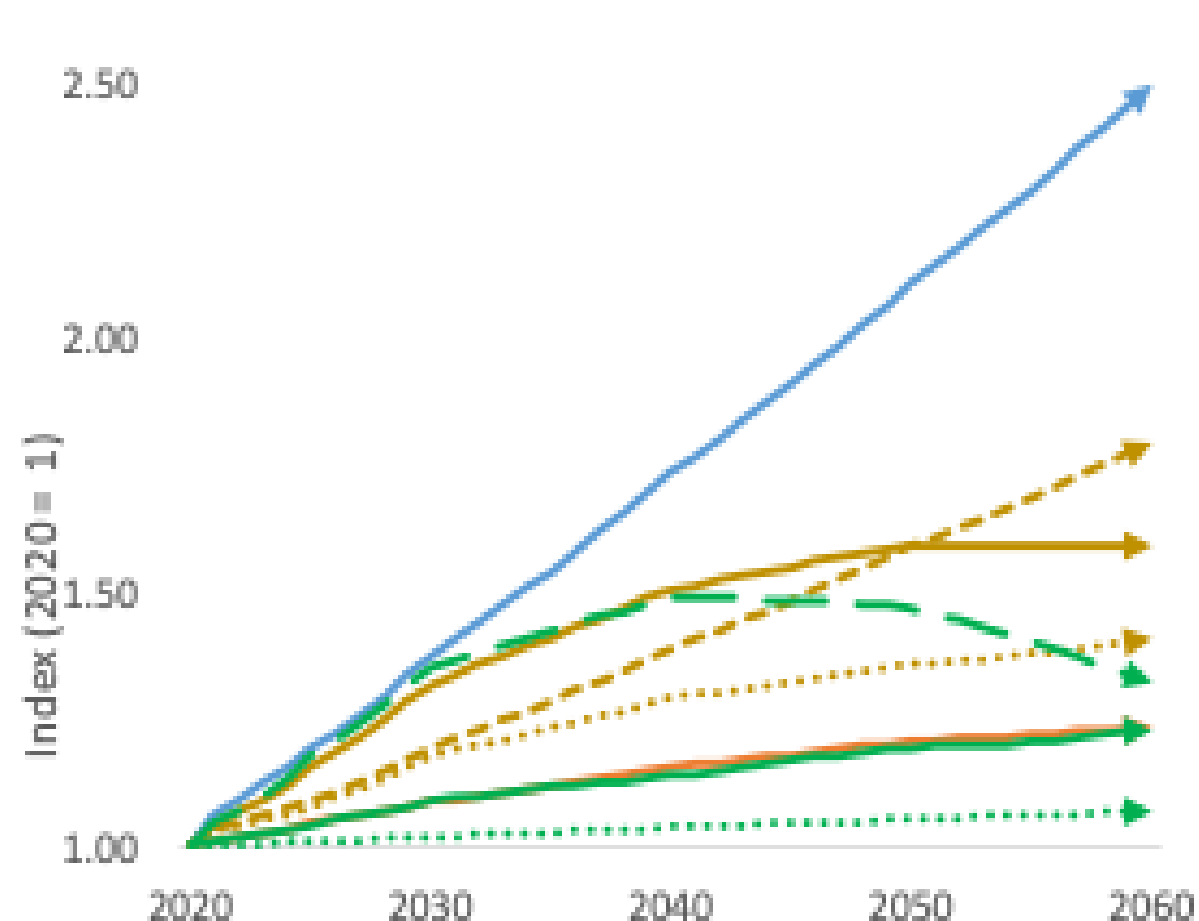




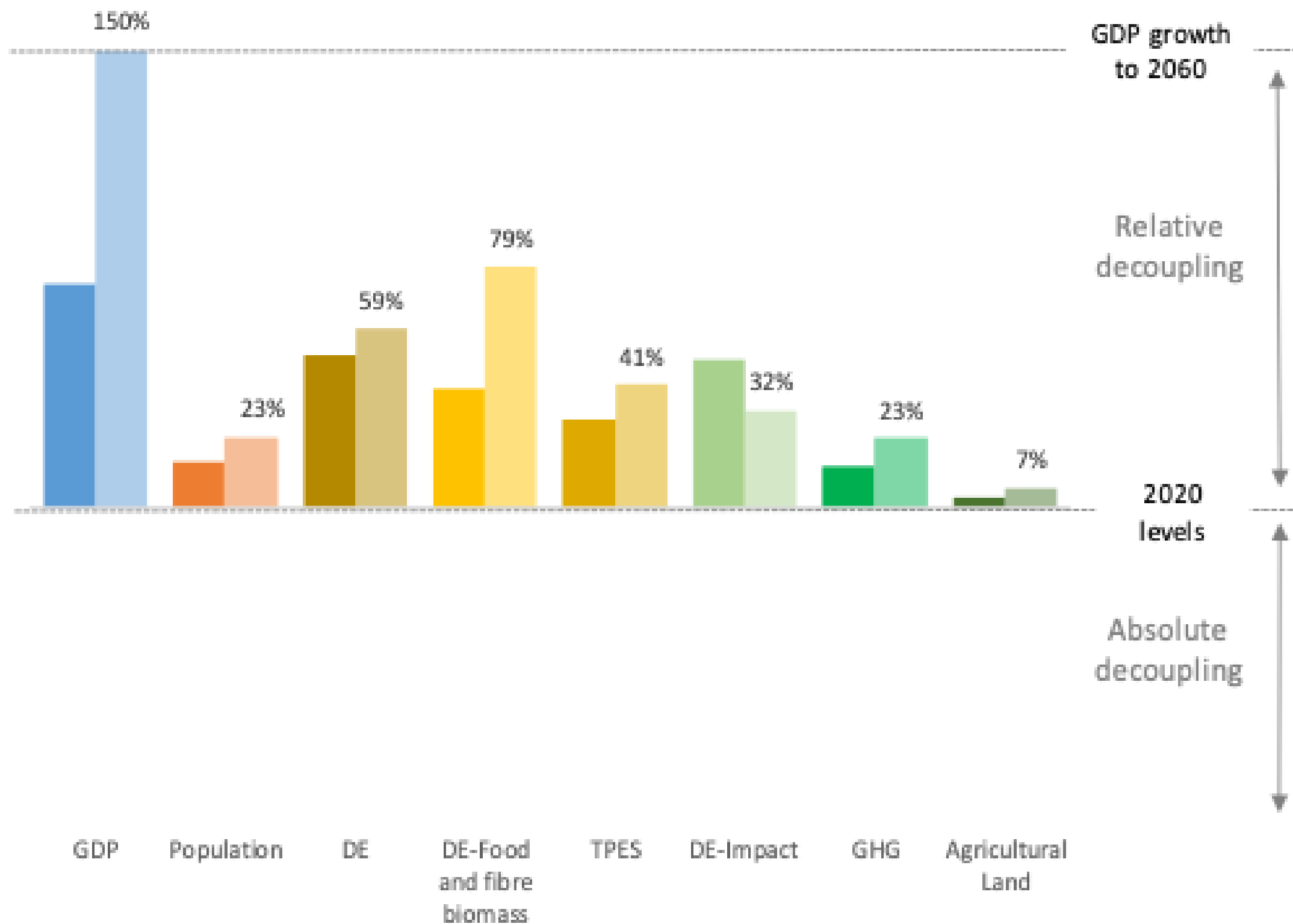
# Scenario outlook Historical trends

## Decoupling outcomes

Chapter 4



- GDP
- Population
- Domestic extraction (DE)
- DE-Food and fibre biomass
- TPES
- DE Impact
- GHG
- Agricultural Land



2040 2060

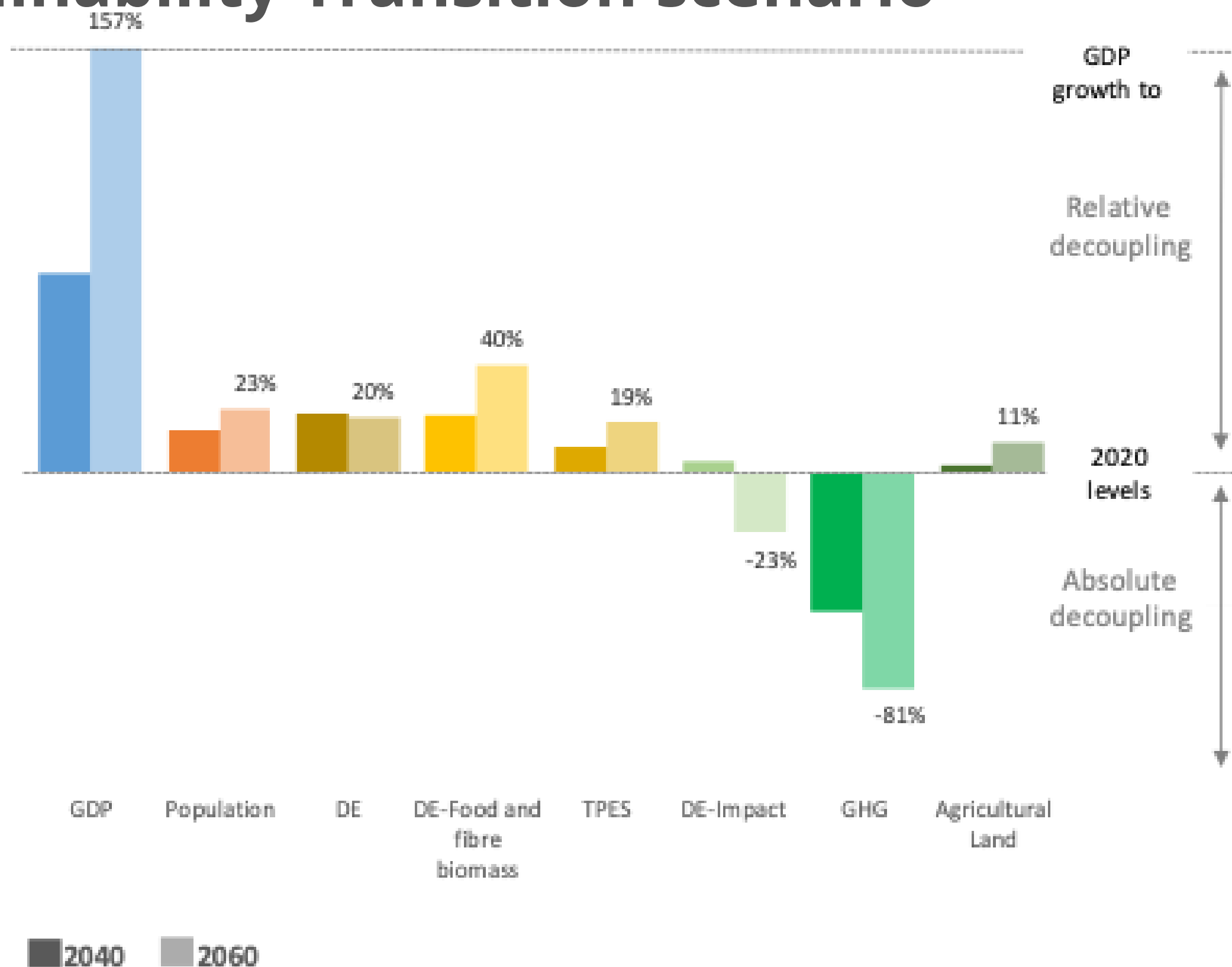
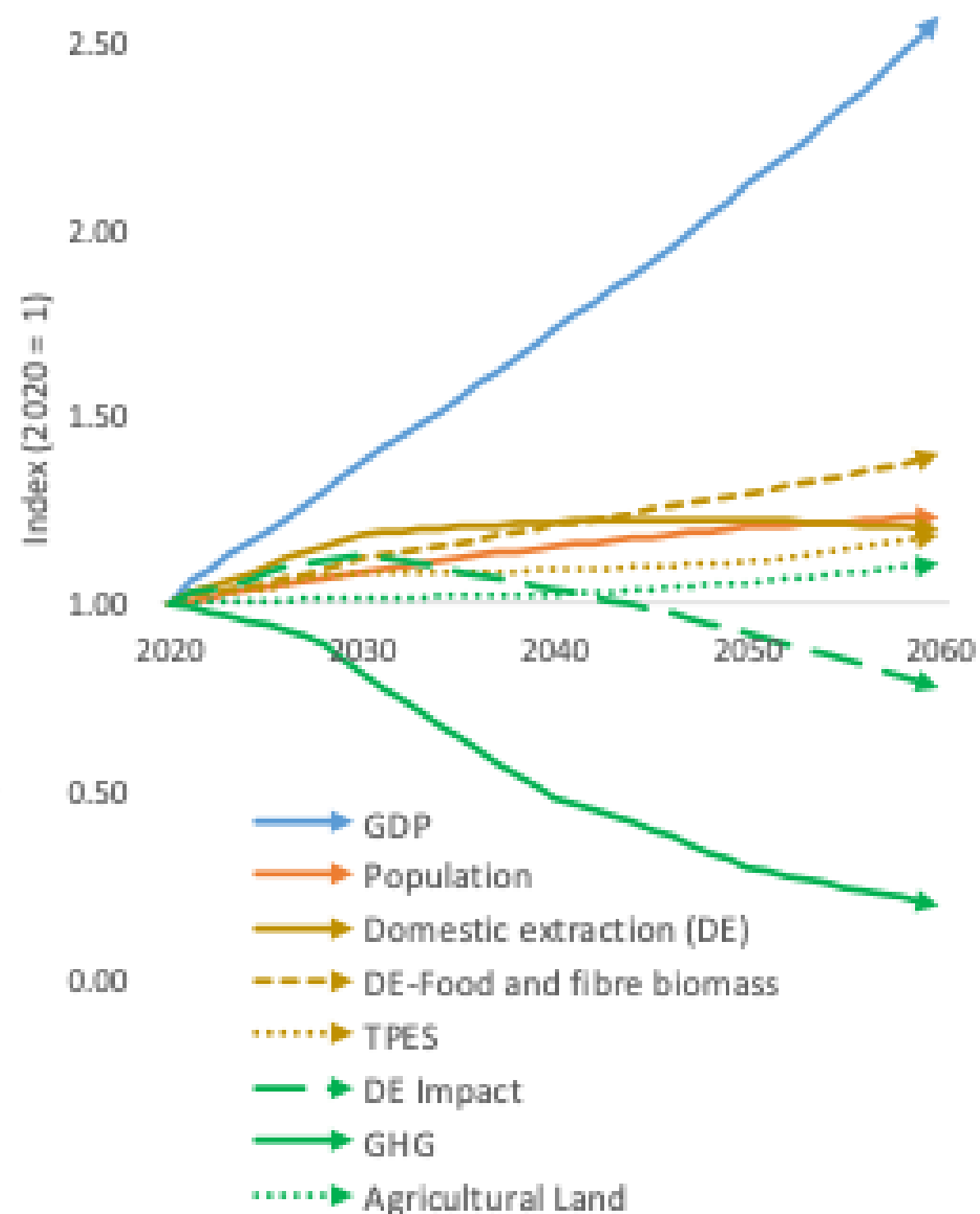


# Scenario outlook

## Decoupling outcomes

## Just Sustainability Transition scenario

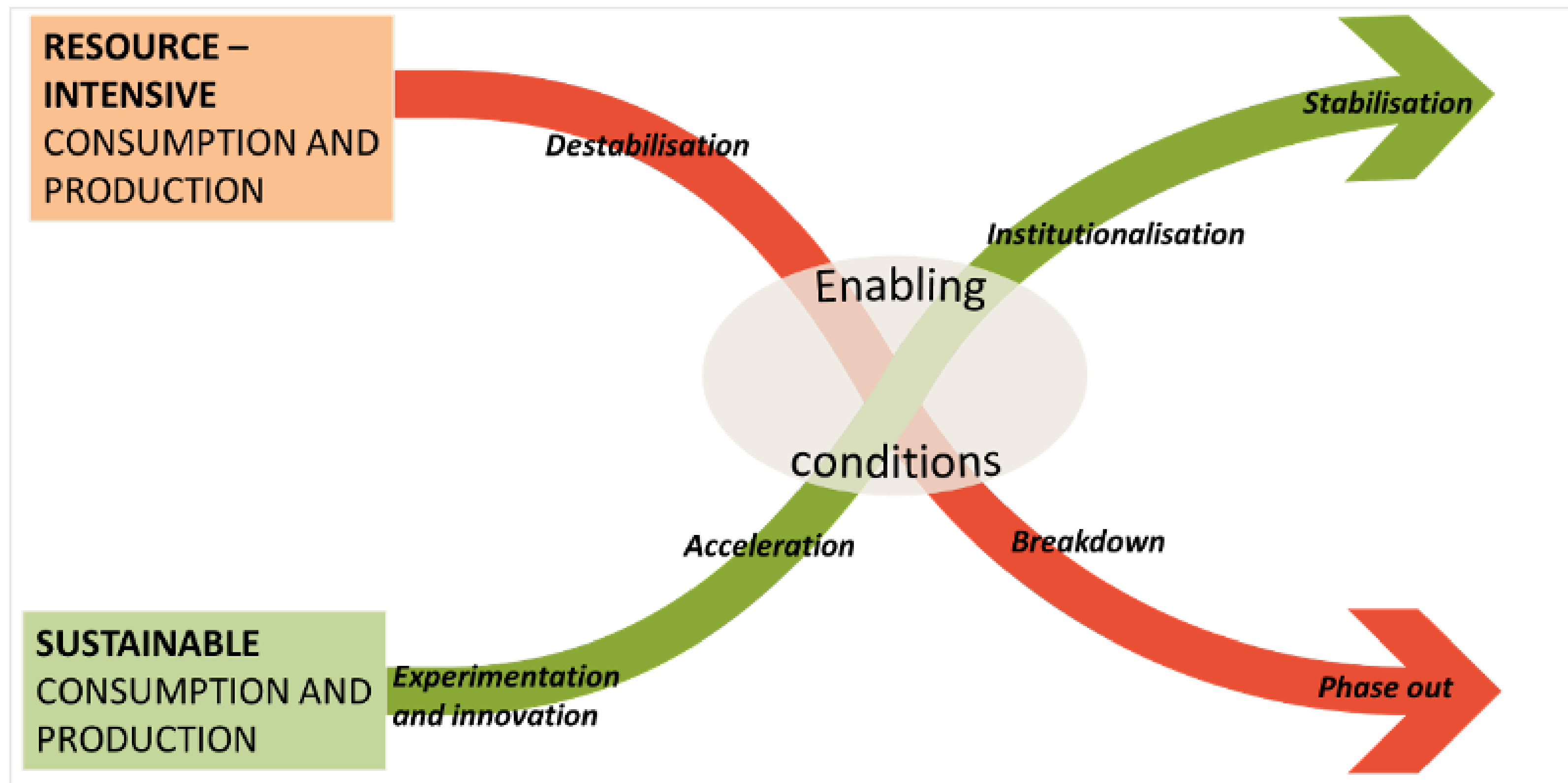
Chapter 4







# Conducting the transition process

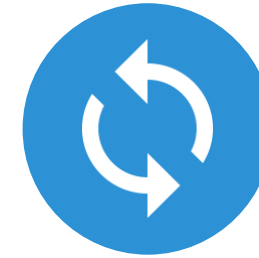




# Recommendations for implementing the Just Sustainability Transition scenario



Institutionalizing resource governance and defining resource use paths



Creating low-carbon, clean and circular business models



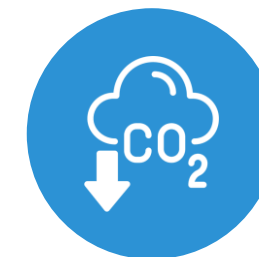
Redirecting finance to serve the transition



Mainstreaming sustainable consumption choices



Making trade an engine of sustainable development



Actions for the most resource-intensive provisioning systems

**Thank you for your attention**