

Integrating conservation and sustainable use in conservation areas



**Strengthening the role of IPLC in
conservation efforts - Experiences from Brazil**

Protected areas vs. IPLC rights

Conflicts and opportunities

- Land conflicts/ land invasions of private tenants in traditionally occupied territories
 - Lack of data on IPLC
 - No unique selling point or public data bank with information on IPLC territories
 - No visibility for land use and access to land of IPLC
- Inclusive / integrative construction with representatives of the traditional peoples and communities, civil society, federal institutions
 - Social control and complaint mechanism e.g. of the Federal prosecutors office (MPF)
 - Trainings and capacity building (e.g. digital inclusion)
 - Communication, Network of young IPLC communicators

28 Traditional Peoples and Communities in Brasil (ILO 169)



“EXTRATIVISTAS”

1. Ethno-racial
Indigenous peoples,
Quilombola communities



2. Predominant work
activity is part of identity
Rubber tappers, Coco
Babaçu breakers,
Mangaba pickers,
riversidepeoples,
traditional fisher etc.



3. Tie to ecosystem
Geraizeros, Caiçaras,
Pantaneiros



4. Especific form of occupation
and use of their territory
Retireiros and Retireiras do
Araguaia, Faxinalenses (small
scale farmers from Paraná grow
yerba mate) or Pomeranos



Context

Highly complex land tenure system, long-lasting processes

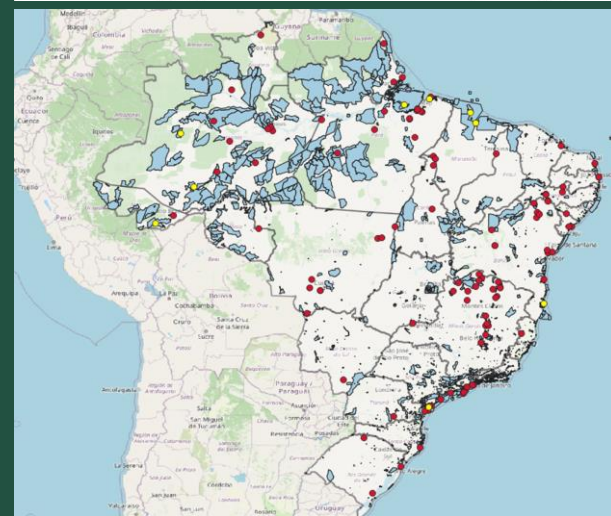
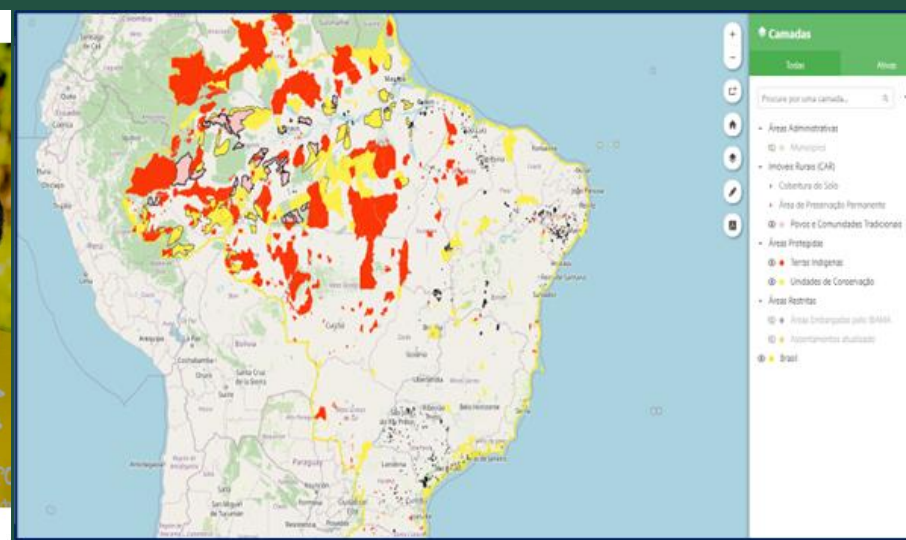
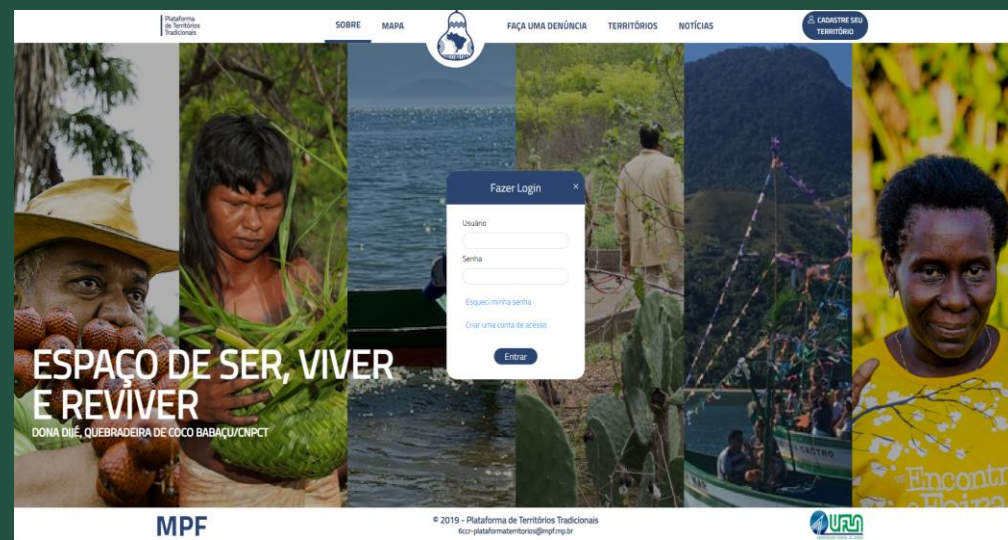
- High diversity of people-land relationships, high number of tenure regimes
- High number of instruments to secure land rights
- High number of institutions responsible for land governance

Considerable progress in land tenure regulation, but still wide-ranging demands from different stakeholders

- Recognition and protection of indigenous territories and traditional peoples
- Considerable overlap between different tenure regimes and situations
- Land regularization in public lands and agrarian reform settlements
- Controversial legal reform processes

High level of technological uptake, lack of integrated solutions

- Wide-ranging digitization of government databases and systems
- Considerable progress regarding interoperability, up-scaling is possible
- FFP approach could be enhanced further



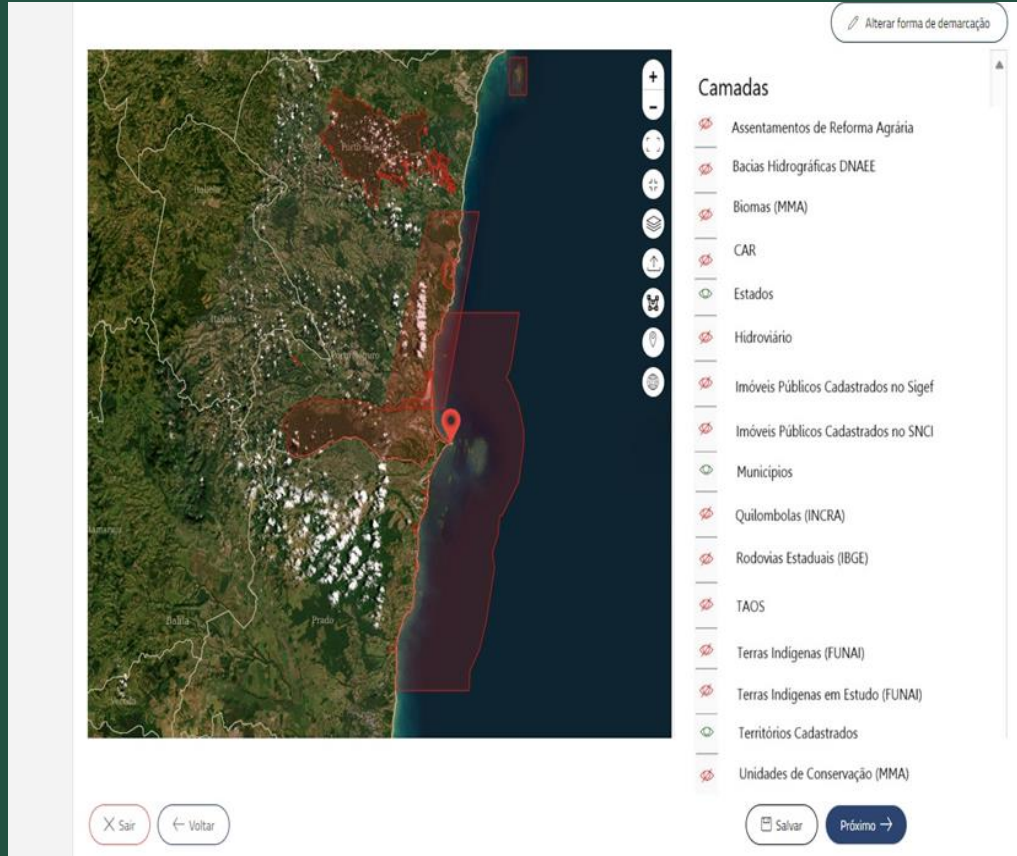
Territórios Vivos - Living Lands (BMZ)

Platform of Traditional Territories (2021)

<https://territoriostradicionais.mpf.mp.br/>

Partnership of the Federal prosecutor's office and the National Council of Traditional Peoples and Communities, supported by various governmental and non-governmental entities, with the objective of making available geo-referenced data and socio-economical information on the areas traditionally occupied by these peoples and communities

Giving visibility to IPLC



IPLC access platform and
autoidentify their territories

Red dot: Traditional local
Community

Platform shows overlapping with
other areas, e.g. conservation area,
called Reserva Extrativista Marinha
de Corumbau-BA (Resex)

Brazil's Protected Area System

5 categories of protected areas of integral protection (high level of protection)

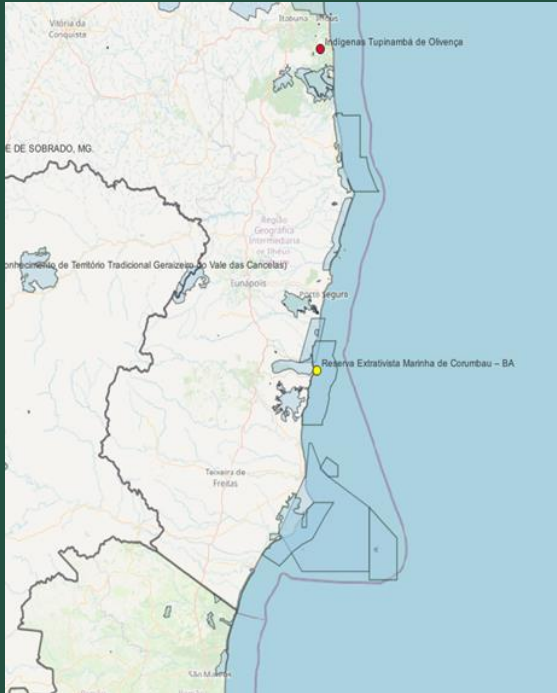
- Ecologic Station (Esec)
- National Parks (Parna)
- Natural Monument (Mona)
- Biologic Reserve (Rebio)
- Wildlife Refuge (RVS)

7 categories of protected areas of sustainable use

- **Environmental Protection Area (APA)**
- Area of Relevant Ecologic Interest (Arie)
- National Forest (Flona)
- Sustainable Development Reserve (RDS)
- Fauna Reserve (Refau)
- **Extractive Reserve (Resex)**

Extractive Reserve (Resex) Canavieiras

combining marine conservation & resource user needs



Objective: protect the way of life and culture of the extractive population resident in the area and ensure the sustainable use of natural resources of the protected area.

- 100.726 ha, IUCN Category VI
- 2.400 households (traditional extractivists)
- Traditional fishing (blue land crab, shrimps, sea bass, etc), mangaba and vanilla extractivism, small-scale family agriculture

TerraMar (IKI)

Participatory Biodiversity Monitoring (Programa Monitora) in Marine and Coastal Protected Areas (MCPA)



Support the federal Protected Area (PA) Agency ICMBio to establish a participatory biodiversity monitoring programme for MCPAs

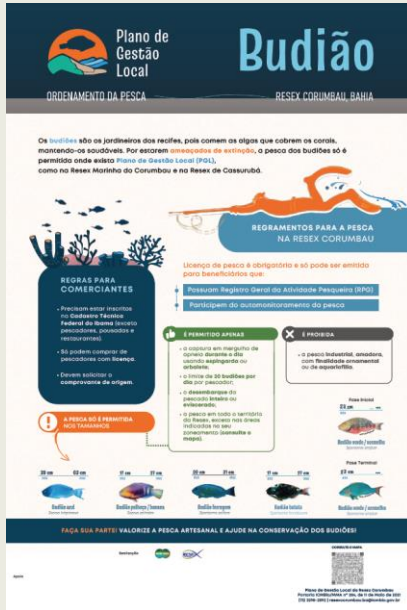
Monitoring protocols for mangroves and traditional fishing (esp. endangered species)

Train of trainers for participatory biodiversity monitoring

Build on experiences of previous IKI Project for Biodiversity Monitoring, which established the Monitora Programme for Forests

TerraMar (IKI)

Local Management Plans (PGL) for traditional fisheries and endangered species



First local management plans developed and approved in 2020

Based on at least 6 months of monitoring data

There are currently 4 local management plans in Brazil which allow the sustainable use of target species under carefully designed conditions (Resex Canavieiras, Corumbau, Cassurubá, APA Costa dos Corais)

Capacity development for PA managers and representatives of local fishing communities

Participatory workshops

TerraMar (IKI)

Environmental and Territorial Zoning of Nautical Activities



Photo: Tiago (Mídia Hara), Zoning Workshop in Tamandaré, Pernambuco, 2019

Participatory workshops with relevant stakeholders (traditional fishing communities, private sector/tourism, environmental agencies)

Defines rules and limits for fishing and tourism in the region, based on studies that assess the area's carrying capacity, to ensure sustainable use of the coastal and marine ecosystem

Approved as state law

TerraMar (IKI)

Strengthening traditional fisherwomen



Photo: Natiê Melo (Instituto Yandê), Costa dos Corais Fisherwomen, 2019

Support for establishing and strengthening networks of traditional fisherwomen (Bahia, Pernambuco, Alagoas)

Capacity development for social organization, women's rights and financial management

Capacity development for developing project proposals (building on experience of DeveloPPP Symrise)

Project proposal for processing organic waste from fisheries (shellfish and crab shells) to produce fertilizer won a prize and resources from the Spanish Embassy

[Video](#) of the Costa dos Corais Fisherwomen's Network

Thank you!



Friederike Brinkmeier (friederike.brinkmeier@giz.de) – Territórios Vivos
Carola Kuklinski (carola.kuklinski@giz.de) – TerraMar