

# Valorisation of the ecological and environmental aspects of cities: Planning the redevelopment of Mesbahiyat Park in Mohammedia

## Climate and environment

Climate and environment have become global issues as the impacts of climate change and ecosystem degradation intensify. International agreements, such as the Paris Agreement, witness the efforts to attenuate these problems and to encourage the transition to more environment-friendly practices. In Morocco, environment is an important and complex subject, involving multifaceted aspects of sustainability, of natural resource management and of ecosystem protection. Consequently, significant measures are being implemented, such as developing hydraulic infrastructure, the setting up of educational programs and awareness campaigns. These initiatives reflect the State's commitment and the integration of environmental concerns into its economic and social policies.

The regional project City-to-City Cooperation Maghreb-Germany (KWT II), commissioned by the Federal Ministry for Economic Cooperation and Development (BMZ), was implemented by the Deutsche Gesellschaft für Internationale Zusammenarbeit (GIZ) GmbH in cooperation with the Service Agency Communities in One World (SKEW) of Engagement Global gGmbH, from March 2020 to February 2024. Among other activities, the regional project supported project partnerships between German and Maghreb cities. The good practices highlighted in this fact sheet have been developed by the partner cities of Mohammedia and Trier. These practices will be scaled up as a part of the follow-up regional project "Urban Adaptation to Climate Change in the Maghreb", running from March 2024 to February 2027.



## Planing the redevelopment of the Mesbahiyat Park in Mohammedia

In Morocco, the regional project KWT II was implemented in collaboration with the Directorate-General of Territorial Communities (DGCT) of the Ministry of the Interior. One of the participating cities was the urban municipality of Mohammedia in the north-west of the country.

Mohammedia has embarked on a project to redevelop the Mesbahiyat Park, which covers an area of 10 hectares within a forest. This project is part of a broader strategy by the urban city of Mohammedia and was initiated in 2020 through a project partnership with the German city of Trier, established in 2016 as part of the first phase of the regional project KWT. It was initiated by a redevelopment study carried out in 2023 with the technical support of KWT II.

The goal is to restore the park's environmental and forestry features, which had been neglected since 2015, while reinforcing Mohammedia's former reputation as a "city of flowers".



## Approaches and actions

The approach followed is illustrated in diagram 01:

**1. Assessing the current situation and analysing needs:** Study carried out using various research tools, such as documentary research, cartographic and topographic analysis, and exchanges with the German partner city. The study focused on the following aspects:

- Assessing the quality of existing facilities and vegetation as well as identifying what needs to be maintained, developed or added.
- Selecting plant species appropriate to the local climate and rationalising the use of water resources
- Drawing up a landscape redevelopment plan

**2. Budget estimates, financing and management method:** This phase included the following actions:

- Evaluation and overall estimate of project costs.
- Identification of potential partners.
- Development of management scenarios to ensure the viability and sustainability of the project.



Left: Visit to the park by the managers and elected representatives of the municipality of Mohammedia, accompanied by a German delegation from Trier. Presentation of a topographical map of the park.

Right: Extract from the zoning plan for the Mesbahiyat Park in the municipality of Mohammedia.

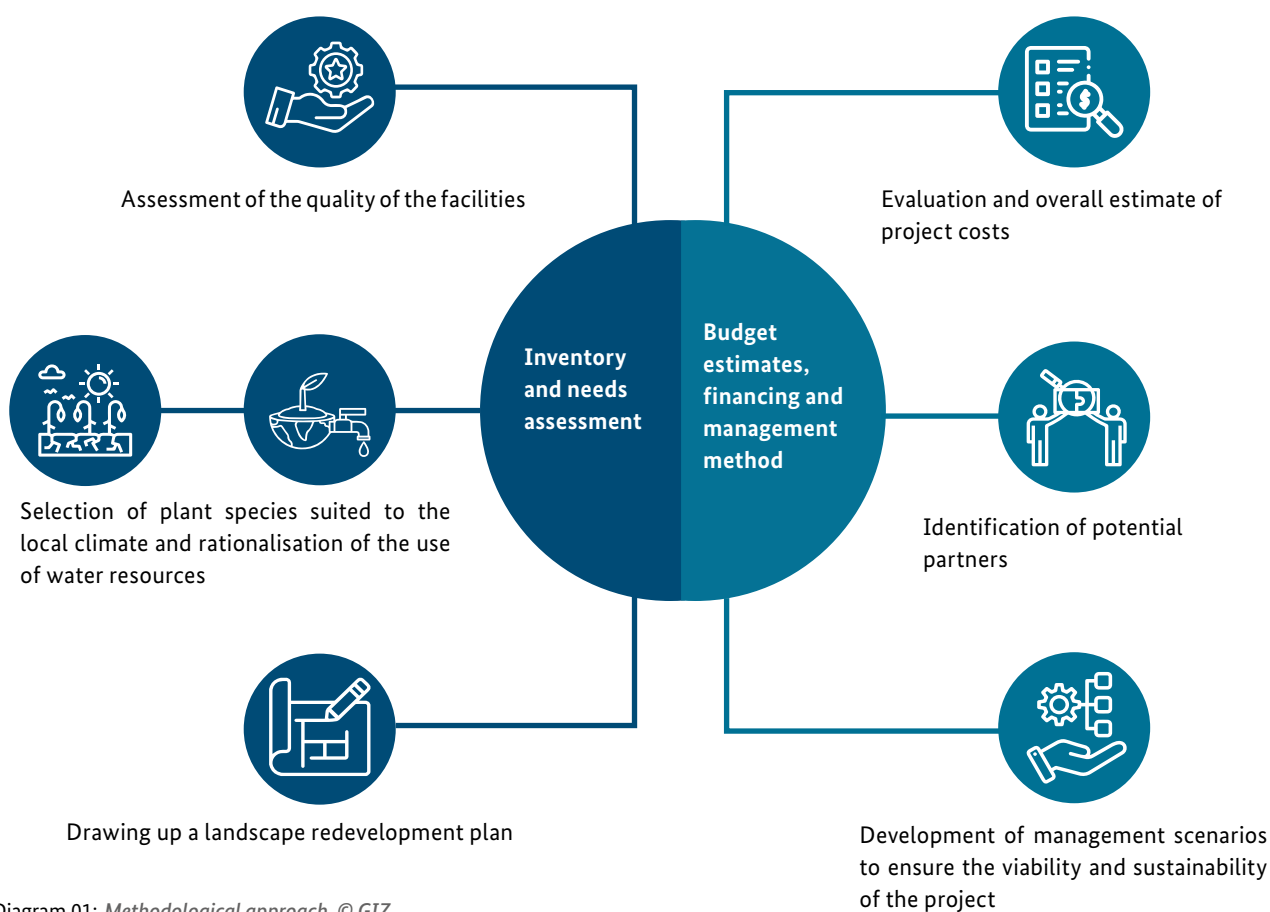


Diagram 01: Methodological approach. © GIZ



## Achievements

The intermediate and expected results of this project are as follows (diagram 02):

### Acquisition of skills in the development of green spaces:

Around ten exchanges, study trips and delegations were organised between Mohammedia and the city of Trier. These exchanges mainly concerned the characteristics and types of vegetation to be planted, and which are adapted to the local climate.

### Other expected results in the medium and long term

#### Economic impact for the municipality:

1

The park could attract local investment and businesses, creating economic opportunities for the city. It may also be possible to form partnerships with local businesses to finance and manage the park.



#### Ecological impact on the municipality:

2

The park could serve as a platform for educational programmes on nature, the environment and sustainability.



#### Social impact on the local municipality:

3

Community events such as festivals, local markets and other events can be held in the park, strengthening community cohesion. A well-designed park can improve residents' quality of life by providing a space for relaxation and recreation. Play areas, walking trails, sports fields, etc., can make the park attractive to residents and visitors alike.



Diagram 02: Achieved and expected results. © GIZ



## Challenges

The redevelopment of Mesbahiyat Park by the municipality of Mohammedia following the redevelopment study may be hampered by challenges of various kinds. These challenges are detailed in diagram 03:

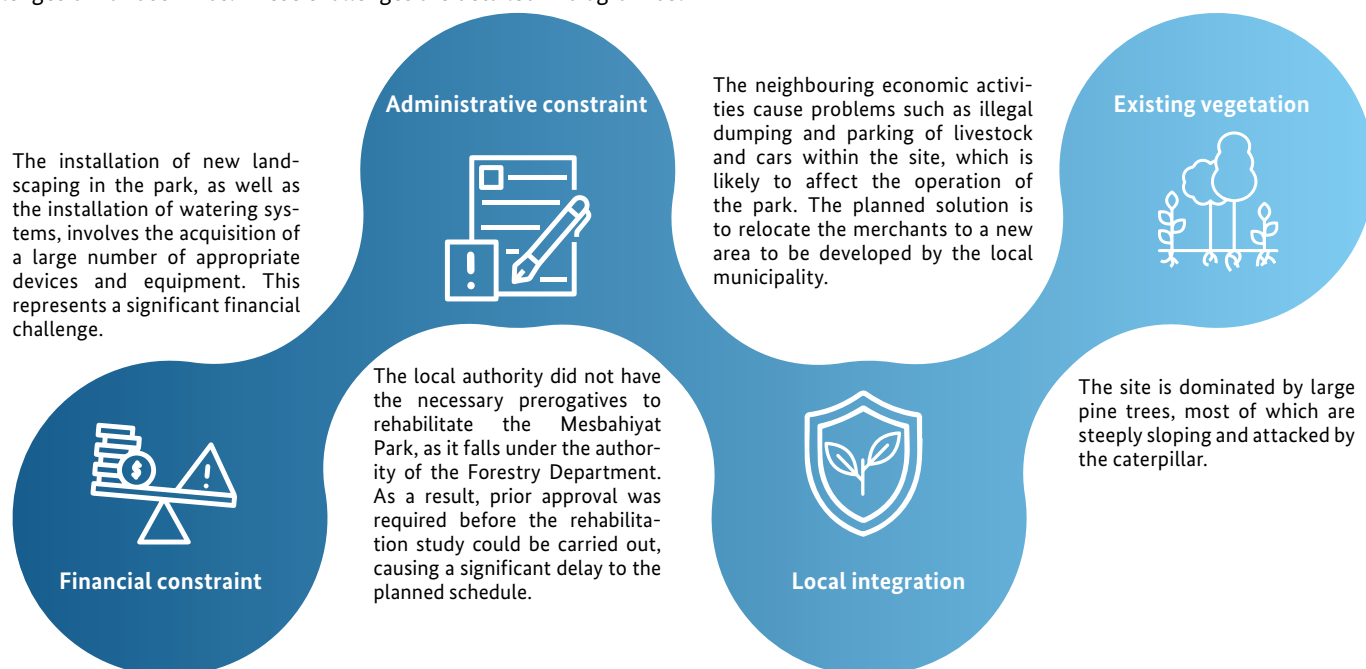


Diagram 03: *Challenges overcome.* © GIZ



## Innovative aspects and strengths

The project to redevelop the Mesbahiyat Park in Mohammedia stands out for its innovative strength and reflects a commitment to the environmental and forestry aspects of the city (diagram 04):

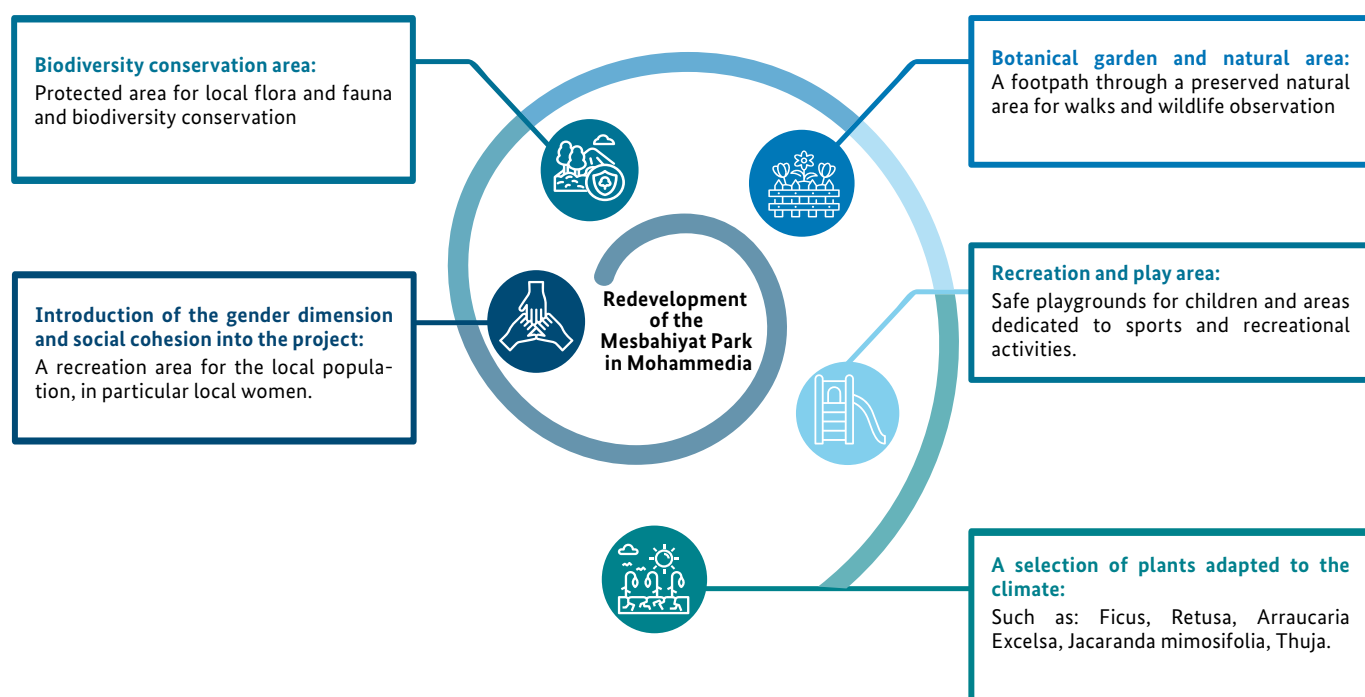


Diagram 04: *Innovative aspects and strengths.* © GIZ



Left: Initial condition of the park, type of vegetation: Aleppo pine. Photo taken in 2023.

Right: Landscaping plan for the Mesbahiyat Park.

Anita Sebïo Kouhè  
Project Manager  
anita.sebio-kouhe@giz.de  
T +49 6196 79 - 1068  
Dag-Hammarskjöld-Weg 1-5  
65760 Eschborn  
Germany



## Best practices, lessons learnt and advice

Several lessons have been learnt, best practices and advice identified from the experience in Mohammedia, which should be considered when implementing similar projects (diagram 05):

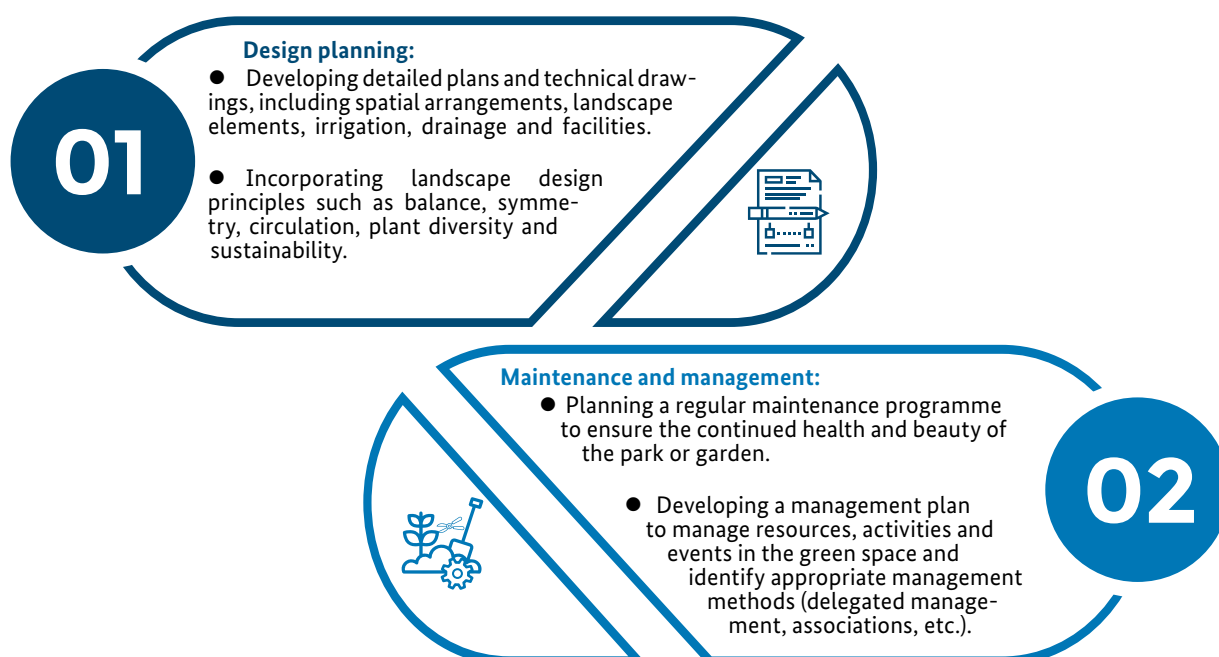


Diagram 05: *Best practices, lessons learnt and advice.* © GIZ

### Published by

Deutsche Gesellschaft für  
Internationale Zusammenarbeit (GIZ) GmbH

Registered offices Bonn and Eschborn, Germany

Regional project City-to-City Cooperation  
Maghreb-Germany (KWT II)  
Dag-Hammarskjöld-Weg 1-5  
65760 Eschborn, Germany  
Tel +49 (0)6196 79 1068  
info@giz.de  
www.giz.de

As at

October 2024

### Text

Samah Flissi, El Mahdi Salahdine, Carole Fappani,  
Essodom Loufaï

### Design

Narimane Boucena, Essodom Loufaï

### On behalf of

Federal Ministry for Economic  
Cooperation and Development (BMZ)

### In cooperation with

Directorate-General of Territorial Communities (DGCT)  
within the Ministry of the Interior in Morocco