

# Take Home Ration

## Supply Chain IT Solution



Published by:  
Deutsche Gesellschaft für  
Internationale Zusammenarbeit (GIZ) GmbH

Registered offices  
Bonn and Eschborn, Germany

Securing Nutrition, Enhancing Resilience Project (SENU)  
B-5/5, Safdarjung Enclave,  
New Delhi – 110029  
T: +91 11 4949 5353  
F: +91 11 4949 5391

E: [info@giz.de](mailto:info@giz.de)  
I: [www.giz.de](http://www.giz.de)

Responsible:  
Dr. Anika Reinbott, Project Director, SENU India, GIZ  
E: [anika.reinbott@giz.de](mailto:anika.reinbott@giz.de)

Author:  
Naveen Garg, Advisor, SENU India, GIZ  
Elisabeth Schröder, Junior Advisor, SENU India, GIZ

Review:  
Sanchi Madan, Intern, SENU India, GIZ

Photo credits/sources:  
© GIZ/SENU

Illustration:  
Crossed Design

Design and layout:  
Crossed Design

GIZ is responsible for the content of this publication.

On behalf of the German Federal Ministry for Economic Cooperation and  
Development (BMZ).

New Delhi, July 2025



# Take Home Ration

Supply Chain IT Solution



## About SENU

The Indo-German development cooperation project 'Securing Nutrition, Enhancing Resilience (SENU)- India' is implemented by the Deutsche Gesellschaft für Internationale Zusammenarbeit (GIZ) GmbH in cooperation with the Indian Ministry of Women and Child Development (MWCD), Government of India. The project is part of the Special Initiative "Transformation of Agricultural and Food Systems" (SI AGER) by the German Federal Ministry for Economic Cooperation and Development (BMZ).

## Aim

Improvement of the nutritional situation of women of reproductive age (15–49 years) and small children (6–23 months) across six districts in the states of Madhya Pradesh and Maharashtra in India

## Overview: THR under the ICDS



6.4 million beneficiaries registered across Maharashtra

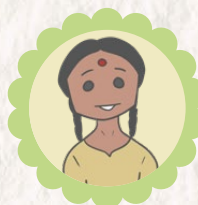


110,000+ Anganwadi Centers (AWCs) providing distribution services

## Who receives THR?



Children (6 months - 3 years)



Adolescent Girls (14–18 Years) in aspirational districts\* of Washim, Gadchiroli, Nandurbar and Osmanabad in Maharashtra.



Severely underweight children (6 months - 6 years)



Pregnant Women and Lactating mothers

\* The Aspirational Districts Programme (ADP) was launched by the Government of India in January 2018 to quickly and effectively transform 112 most under-developed districts across the country.





## Problem

Malnutrition in children is a complex and multi-dimensional issue, caused by several factors, key amongst them being poor Infant and Young Child Feeding (IYCF) and caring practices. The Government of India has been implementing several programmes which are designed to improve the nutritional status of children.

Under Mission POSHAN 2.0 the Integrated Child Development Services (ICDS) scheme targets children under 6 years of age, pregnant women, lactating mothers and adolescent girls through a network of government owned Anganwadi Centres (AWCs) across the country. The scheme also includes distributing Take-Home Ration (THR) consisting of micronutrient fortified blended foods and/or energy dense foods. The principle behind providing the THR is to fill the nutrition gap and improve IYCF practices.

“The App ensures that the THR, meant to add value to the child and mother’s nutrition reaches them timely and in correct quantities. We also do demonstrations on how to use the THR correctly. The parents are then able to do the same in their homes.”

– Karuna Motiram Bansare,  
Anganwadi Worker, Thane,  
Maharashtra





## IT Solution

GIZ 2028 vision focuses on integrated solutions wherein digital transformation and excellence in implementation are key supporting concepts. In line with this vision, the SENU project has supported the Department of Women and Child Development, Maharashtra in developing the 'Food Supply Monitoring System' to monitor the supply chain of THR packets.

- The solution consists of a web application and a mobile app. It is used by department officials (both state-level and district-level), THR suppliers and the Anganwadi Workers.
- The web application includes the functionalities of demand generation based on count and category of beneficiaries, supply order generation, generation of delivery challan with QR code for every AWC, dashboards, and delivery status reports for its users.
- The mobile app records the receiving of THR packets at the Anganwadi Centre as per the quantities ordered and has provision for capturing the reason for rejection of delivery in case of quality issues.
- The mobile app also has provision of uploading the pictures of the deliveries received at the AWC.
- It works in both online and offline modes.





The solution is multi-lingual (Marathi, Hindi and English) and has been piloted in 2 districts. Trainings have been provided to the users of the solution in the pilot districts. The department is now upscaling this IT solution across the state to cover all the remaining districts.

“GIZ has developed an effective tool for us and I am sure it will have an impactful run in the state when up-scaled. This will add value to our long-term goal of eliminating malnutrition among young children, pregnant and lactating women.”

— Kailas Pagare, Commissioner ICDS, Maharashtra

“I find this App useful in many ways. It helps us to monitor the delivery status of THR packets for beneficiaries.

—Swati Madan Jadhav, Anganwadi Worker, Waoli



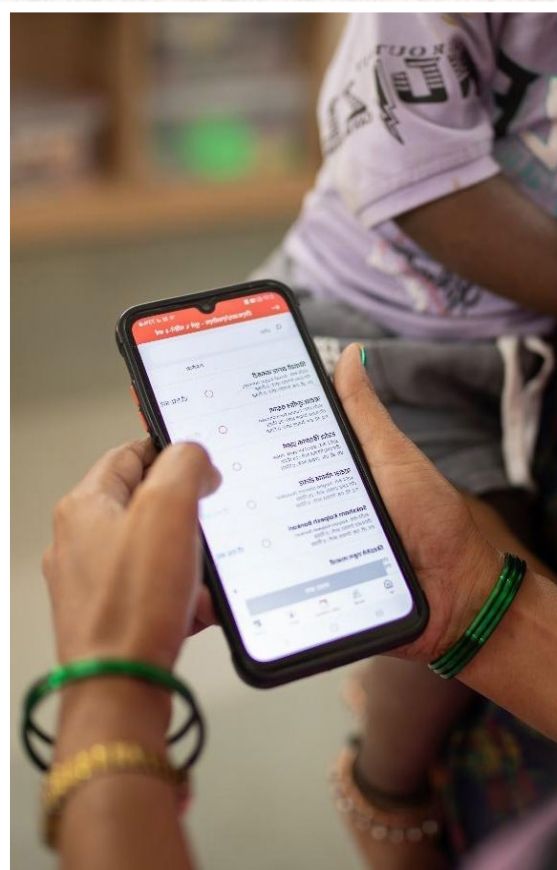


## Actors and Stakeholdres Involved



## Benefits

- The solution empowers the stakeholders involved by providing real time tracking of demand, supply and delivery of THR packets at the Anganwadi Centre.
- It instills discipline in the entire system in terms of adherence to quality and timelines.
- The app leads to ensuring availability of THR packets for the beneficiaries at the Anganwadi Centre in the right quantities with the right quality at the right time.





## Potential Challenges

THR Supply Chain IT solution offers a transformative approach to streamline the supply and availability of THR packets at the Anganwadi Centres. Aspects to consider before the implementation:

- Change management from a manual system to an IT based system.
- Capacity development of the stakeholders particularly the Anganwadi Workers and the district level ICDS officials in terms of using the digital solution.
- Ensuring internet connectivity at the Anganwadi Centres especially those which are located in remote areas.

## Scalability and Sustainability

The Department of Women and Child Development in Maharashtra has provided server infrastructure, and the solution is hosted on their servers. The solution is being upscaled within Maharashtra and it is possible to take it to other states also. For that, the IT Solution needs to be customised as per the requirements of that state.

“When the App was first introduced, we felt that it would increase our workload. But when we started using it, we realised that it actually reduced our work. Even an Anganwadi worker with low literacy skills can handle the App. The best feature of the App is that we can identify several important factors right on the spot. The app carries details of the THR that is being supplied. Sometimes the suppliers may make errors. But the App helps us get in touch with them directly. This was not possible earlier and we had to go through several channels to register the complaint.”

—Chaya Nirkute, Anganwadi Worker, Dahagaon Village, Maharashtra







[https://fsms.mhcds.com/accounts/user\\_login](https://fsms.mhcds.com/accounts/user_login)

## Transparency in Action

View the Monitoring System



Deutsche Gesellschaft für Internationale Zusammenarbeit (GIZ) GmbH

B-5/5, Safdarjung Enclave,  
New Delhi – 110029

T: +91 11 4949 5353  
F: +91 11 4949 5391