

A photograph of several wind turbines in a desert landscape under a clear blue sky. The turbines are white with three blades each. The ground is dry and sandy with some small desert plants. The sky is a gradient of blue. A semi-transparent red banner is at the top, and a red rectangle is in the top right corner. The main title is in large white text on the left, and the date is in white text on the right.

**Just Energy Transition in Coal Regions**

# Innovation Regions for a Just Energy Transition – IKI JET Project presentation

December 2025

# The IKI JET Project

## “Innovation Regions for a Just Energy Transition”

On behalf of:



of the Federal Republic of Germany



<b>Commissioning Parties</b>	International Climate Initiative (IKI) of the German Federal Ministry for the Environment, Climate Action, Nature Conservation and Nuclear Safety (BMUKN) and jointly financed by the EU Commission – DG INTPA, Global Challenges Multiannual Indicative Programme 2021-27 for the <b>JET-CR Platform</b>
<b>Objective</b>	Support and accelerate just energy transitions (JET) away from coal to renewable energy and other sustainable economic activities in the Global South
<b>Countries</b>	Global approach with in-depth support to Indonesia and Colombia

### Implementing organisations

- Deutsche Gesellschaft für Internationale Zusammenarbeit (GIZ) GmbH
- Climate Action Network International (CAN International)
- International Institute for Sustainable Development (IISD)
- International Labour Organisation (ILO)
- Solidarity Center
- Union Abroad - APHEDA
- Wuppertal Institute for Climate, Environment and Energy

**Project duration** December 2022 – January 2027

Implemented by



# The project in a nutshell

Support countries in **developing plans for a just transition away from coal to renewable energy and other sustainable economic activities with a focus on the regional level.**

## Project components

I

### Just Energy Transition in Coal Regions - Inter-regional Platform (JET-CR Platform)

On behalf of:  
  
Federal Ministry  
for the Environment, Climate Action,  
Nature Conservation and Nuclear Safety  
of the Federal Republic of Germany

 **IKI** INTERNATIONAL  
CLIMATE  
INITIATIVE

 **Co-funded by  
the European Union**

**International Network of Innovation  
Regions**

**International Policy Dialogue**

**International Knowledge Hub**

II

### Indonesia Component


On behalf of:  
  
Federal Ministry  
for the Environment, Climate Action,  
Nature Conservation and Nuclear Safety  
of the Federal Republic of Germany

 **IKI** INTERNATIONAL  
CLIMATE  
INITIATIVE

**JET planning in two coal regions**

III

### Colombia Component

On behalf of:  
  
Federal Ministry  
for the Environment, Climate Action,  
Nature Conservation and Nuclear Safety  
of the Federal Republic of Germany

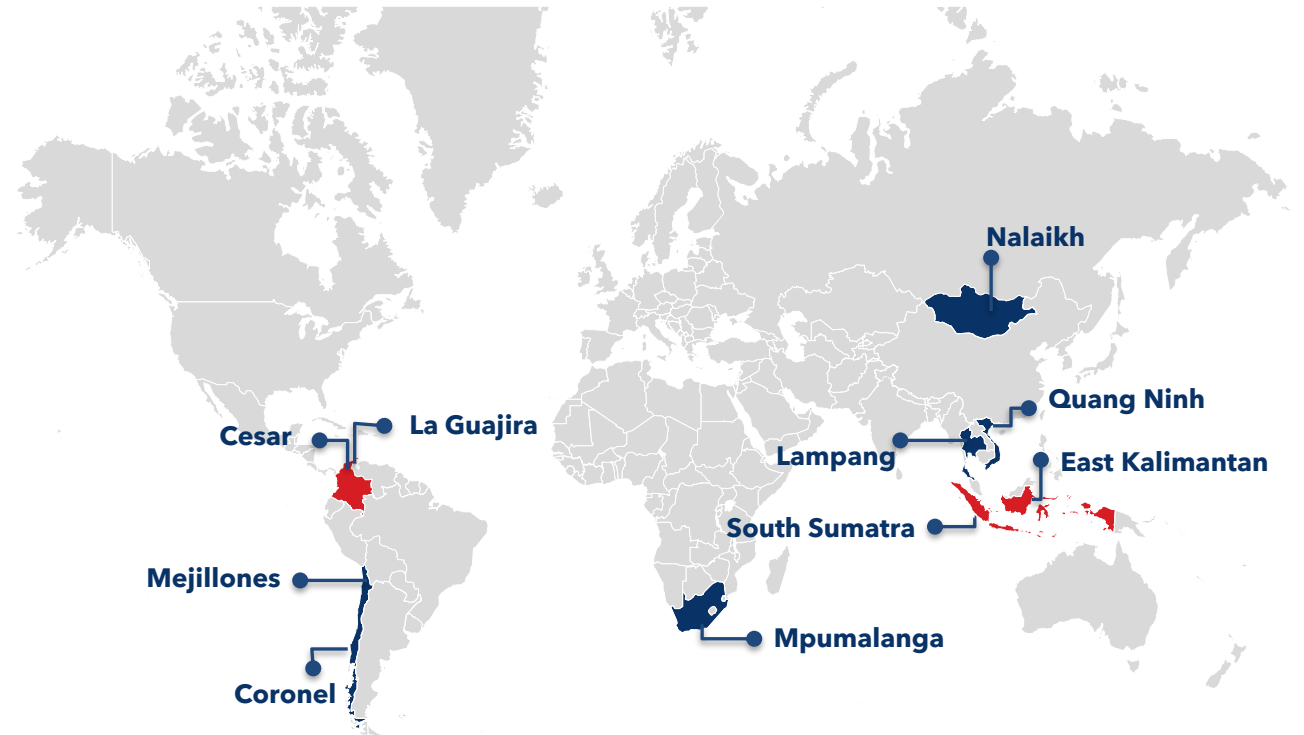
 **IKI** INTERNATIONAL  
CLIMATE  
INITIATIVE

**Support Energy Communities**

# Target countries and regions

## Participants in the **Interregional Platform**

- Chile (Coronel, Mejillones)
- Colombia (La Guajira, Cesar)
- Indonesia (East Kalimantan, South Sumatra)
- Mongolia (Nalaikh district)
- South Africa (Mpumalanga)
- Thailand (Lampang)
- Viet Nam (Quang Ninh)



## Global

Close cooperation with initiatives such as:



# The JET- CR Interregional Platform



**International Network  
of coal regions**

**International  
Policy  
Dialogue on  
JET**

**Knowledge Hub  
on JET**

**Peer-to-peer  
knowledge  
exchange and  
experience  
sharing**

**Training  
programs and  
learning forum**

**In-country  
technical  
assistance and  
capacity  
building for  
participating  
JET regions**

**International  
dialogue on  
policies to  
support JET in  
coal regions**

**Online portal &  
knowledge  
platform on JET  
in coal regions**

**New knowledge  
on JET in coal  
regions**

# In-depth interventions: Indonesia and Colombia

- Provide intensive support for social dialogue, stakeholder engagement, innovation, employment, and labor policies, and energy transition processes
- Help spur accelerated action and advance coal-related just energy transition in the regions
- Inform, support and encourage respective policy discussion and formulation on the national level





## Core element: Co-creation of knowledge

Knowledge generation, based on local needs, and informing social dialogue, stakeholder engagement and transformational measures:

- A **mapping** of key actors
- **Just transition scenarios for the power sector**
- **Employment and social impacts of scenarios assessments,**
- **Impact assessments of policy and investment options**
- **Options for transformational measures**



Source: Wuppertal Institute

## Core element: social dialogue and stakeholder engagement

- Enhancing the **capacity** of unions, communities, and employers' organisations
- **Mapping** of existing institutions and mechanisms
- Social dialogue **mechanisms**
- Establishment of platforms for **engagement** of civil society
- **Recommendations** on regional just transition
- Just transition **strategies** designed through social dialogue
- **CSO input** to development of recommendations for a regional just energy transition



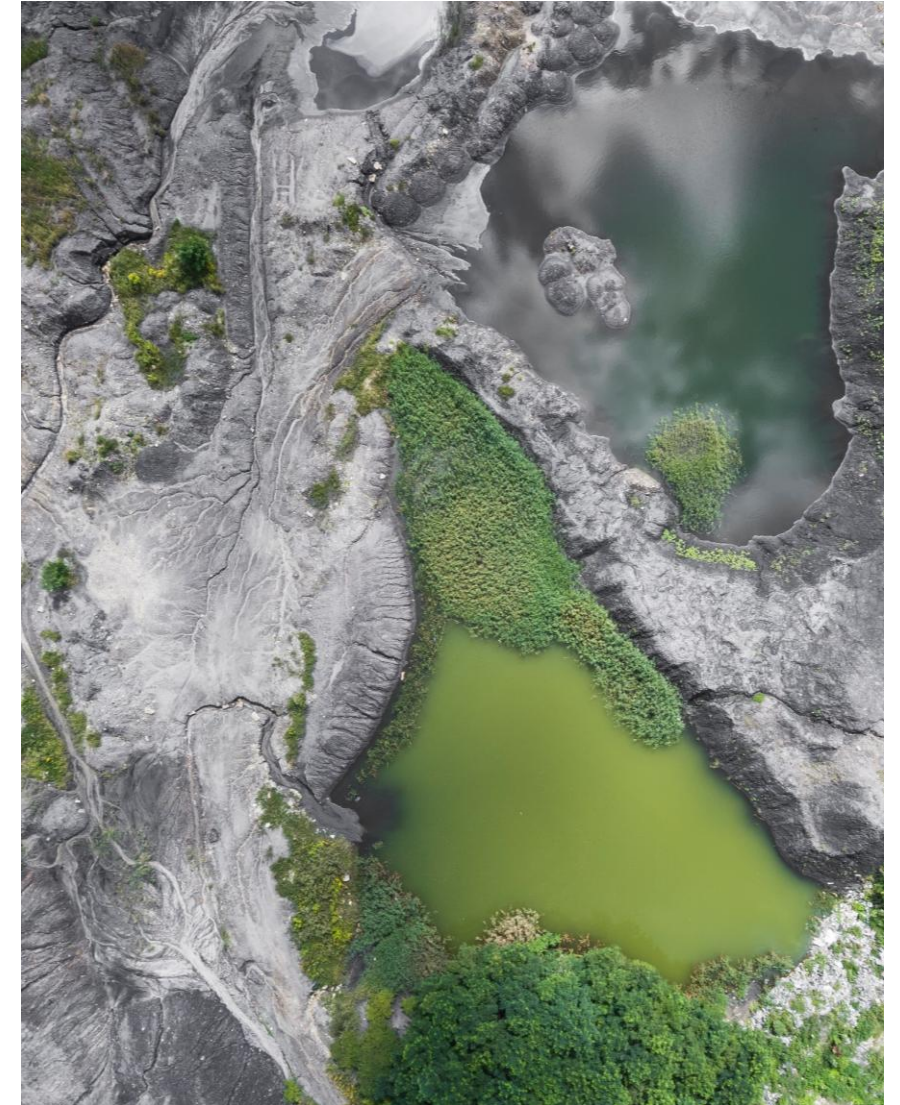


## Core element: potential transformational measures

Formulation of just energy transition **plans** and **strategies**, including policies and programs and targeted support for **potential transformational measures**:

- Economic **diversification and regeneration**
- **Social protection measures**
- **Decent job creation** measures
- **Community-based models** for economic diversification and regeneration

**Measures to be designed based on research and dialogue**



© Mariusz Prusaczyk (Unsplash)

# Promoting dialogue and influencing regional & national policies

## JET Strategy in the Nalaikh Region, Mongolia

Development of a JET strategy with the regional government to be included in the Nalaikh Region Development Plan



*Plan TEJ Nalaikh, Mongolia.*

## Regional Consultation Forums, Indonesia

Establishment of Consultation Forums in the South Sumatra and East Kalimantan regions with tripartite and non-tripartite participation



*RCF East Kalimantan, Indonesia.  
© Hermand Barker*

## Regional and National Development Plan: Indonesia

Supporting the inclusion of JET aspects in National and Regional Development Plans



*National Development Plan, Indonesia.*

# Key elements of the JET-CR Platform

## International Forum for Coal Regions in Transition

Yearly hybrid event convening stakeholders (policy-makers, NGOs, academics, unions, & industry) from IKI JET regions to share experiences and lessons learnt of just transition processes around the world

### International Forum 2023

Berlin, Germany & online



© IISD/ Bethan Jones

Opening - Anja Hajduk, State Secretary, Ministry for Economic Affairs and Climate Action

**Find all recordings and presentations [here](#) & the key-takeaways [here](#)**

### International Forum 2024

Pretoria, South Africa & online



© Jess Meniere

Opening of the forum, with participants from all the IKI JET regions and the Philippines

**Find all recordings, presentations & key-takeaways [here](#)**



Opening - Duduzile Sibiya, Mpumalanga Provincial Government, DARDLEA

### International Forum 2025

East Kalimantan, Indonesia & online



Opening of the forum, with participants from all the IKI JET regions, India and Kazakhstan

**Find all recordings, presentations & key-takeaways [here](#)**



© Ranam Production

Closing of the forum with all delegates



# Key elements of the JET-CR Platform

## Expert Exchange Series



[Just Transition Toolbox](#)



[Gendering the debate: Just energy transition for all](#)



[Skilling, Upskilling and Reskilling for a Just Transition in Coal Regions](#)



[Financing the Early Retirement of Coal-Fired Power Plants](#)



[Assessment tool for just energy transition plans](#)



[Youth Empowerment for a Just Energy Transition](#)



[Financing Justice in the Just Transition](#)



[Coal Mine Methane](#)

# Country-specific and global knowledge

## CASE STUDY

### Choosing Renewable Energy for an Industrial Park in Nalaikh, Mongolia

Country: Organisation:  
Mongolia GIZ

The Mongolian district of Nalaikh is the country's capital Ulaanbaatar's largest coal mine. Nalaikh's mining industry employs 10,000 people and 1 million tons of coal are mined annually.

[Download publication](#)

## CASE STUDIES

### The Day Krabi Became Coal-Free, Thailand

Country: Organisation:  
Thailand GIZ

This case study looks at the role of activists and community groups in the opening of a proposed coal mine in Krabi.

[Download publication](#)

## POLICY BRIEF

### Just Energy Transitions for All – Gender in just energy transitions

Country: Organisation: Languages:  
Global GIZ English

The transformation of the energy system away from coal has gender-specific impacts. These should be properly addressed in just transition strategies. A just energy transition can be seen as chance to make society fairer and more inclusive with respect to gender.

[Download publication PDF](#)

### Just Energy Transition in Colombia: Status Quo, Challenges and Chances



An assessment with a focus on the coal regions of Cesar and La Guajira  
Kerstin Mohr, Johannes Thoma, Maria Cecilia Bonilla

[Just Energy Transition in Coal Regions](#)



### Assessment Tool for Just Energy Transition Plans

**giz**

Support for policymakers, stakeholders, and practitioners  
Mags Bird, Patrick Böker, Martin Klein, Katie Treadwell

[Just Energy Transition in Coal Regions](#)



### Assessment and Status Report on Just Energy Transition in Mongolia

**giz**

Bujirikhnam Nyamag, Valentin Heimes, Klaus Souerborn, Katharina Hartmann, Lars Blume

[Just Energy Transition in Coal Regions](#)



### Assessment and Status Report on Just Energy Transition in Thailand

**giz**

Suchart Klakawee, Valentin Heimes, Klaus Souerborn, Katharina Hartmann, Lars Blume

May 2024

[Just Energy Transition in Coal Regions](#)





# Acknowledgements

## Just Energy Transition in Coal Regions

The project "Innovation Regions for a Just Energy Transition" is co-financed by the International Climate Initiative (IKI) of the German Federal Ministry for the Environment, Climate Action, Nature Conservation and Nuclear Safety (BMUKN) and by the Directorate-General for International Partnerships (DG INTPA) of the European Commission (DG INTPA) for the Interregional Platform for Just Energy Transition in Coal Regions (JET-CR).

On behalf of:



of the Federal Republic of Germany



Co-funded by  
the European Union

# Just Energy Transition in Coal Regions

## Contacts

### **Deutsche Gesellschaft für Internationale Zusammenarbeit (GIZ)**

Philipp Schattenmann  
[philipp.schattenmann@giz.de](mailto:philipp.schattenmann@giz.de)

### **Climate Action Network International**

Tasneem Essop  
[tessop@climatenetwork.org](mailto:tessop@climatenetwork.org)

### **International Institute for Sustainable Development**

Philip Gass  
[pgass@iisd.ca](mailto:pgass@iisd.ca)

### **International Labour Organisation**

Camilla Roman  
[romanc@ilo.org](mailto:romanc@ilo.org)

### **Solidarity Center**

Abby Güner  
[aguner@solidaritycenter.org](mailto:aguner@solidaritycenter.org)

### **Union Abroad – APHEDA**

Steve Mullins  
[smullins@apheda.org.au](mailto:smullins@apheda.org.au)

### **Wuppertal Institute for Climate, Environment and Energy**

Timon Wehnert  
[timon.wehnert@wupperinst.org](mailto:timon.wehnert@wupperinst.org)